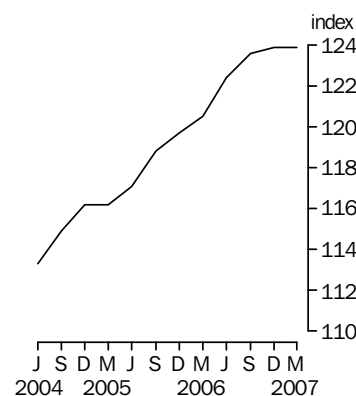


PRODUCER PRICE INDEXES AUSTRALIA

EMBARGO: 11.30AM (CANBERRA TIME) MON 23 APR 2007

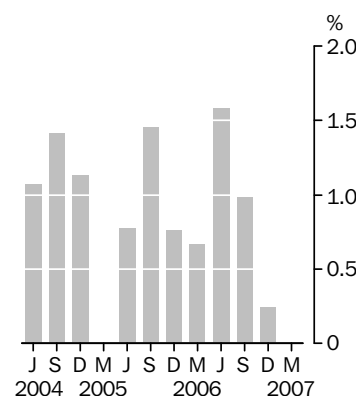
Final Stage

Base: 1998-99 = 100.0



Final Stage

Quarterly % change



INQUIRIES

For further information about these and related statistics, contact the National Information and Referral Service on 1300 135 070 or Lee Taylor on Canberra (02) 6252 6251.

KEY FIGURES

STAGE OF PRODUCTION

	Dec Qtr 06 to Mar Qtr 07 % change	Mar Qtr 06 to Mar Qtr 07 % change
Final (Stage 3) commodities (excl. exports)	0.0	2.8
Domestic	0.1	3.8
Imports	-1.1	-2.8
Intermediate (Stage 2) commodities	0.3	4.6
Domestic	0.7	5.5
Imports	-1.8	-1.3
Preliminary (Stage 1) commodities	0.1	4.5
Domestic	0.5	5.4
Imports	-2.3	-1.8

KEY POINTS

FINAL (STAGE 3) COMMODITIES

- The final (Stage 3) index remained unchanged in the March quarter 2007.
- The domestic component rose 0.1%, mainly due to price increases in building construction and other manufacturing. Partially offsetting these were decreases in other agriculture (bananas) and motor vehicles & parts.
- The imports component fell by 1.1%, due to price decreases for electronic equipment, industrial machinery, photographic and scientific equipment and tobacco products.

INTERMEDIATE (STAGE 2) COMMODITIES

- The intermediate (Stage 2) index rose 0.3% in the March quarter 2007.
- The domestic component rose 0.7%, mainly due to price increases for grain, sheep, beef & dairy cattle products, property operator and developers, some components of other agriculture, other business services & business management services. Partially offsetting these increases were decreases in prices for basic non-ferrous metals (smelted or refined) and metal ores.
- The imports component decreased 1.8%, due to prices falls for oil, fabricated metal products, petroleum, non-ferrous basic metals (shaped), electronic equipment and plastic products.

PRELIMINARY (STAGE 1) COMMODITIES

- The preliminary (Stage 1) index rose 0.1% in the March quarter 2007.
- The domestic component rose 0.5% mainly due to price increases for property operator and developers, grain, sheep, beef & dairy cattle products, some components of other agriculture, other business services & business management services. Partially offsetting these were decreases in basic non-ferrous metals (smelted or refined) and metal ores.
- The imports component decreased 2.3%, due to price falls for oil, non-ferrous basic metals (shaped), and petroleum. Iron and steel partially offset these decreases.

NOTES

FORTHCOMING ISSUES

ISSUE (Quarter)

RELEASE DATE

June 2007

23 July 2007

September 2007

22 October 2007

.....

CHANGES IN THIS ISSUE

There are no changes in this issue.

RELATED STATISTICS

For more information about statistics in this publication contact Lee Taylor on Canberra (02) 6252 6251, or email <lee.taylor@abs.gov.au>.

.....

ABBREVIATIONS

ABS Australian Bureau of Statistics
ANZSIC Australian and New Zealand Standard Industrial Classification
c.i.f. cost, insurance and freight
f.o.b. free on board
n.e.c. not elsewhere classified
n.e.s. not elsewhere specified
SOP stage of production

Brian Pink
Australian Statistician

COMMENTARY

STAGE OF PRODUCTION OVERVIEW

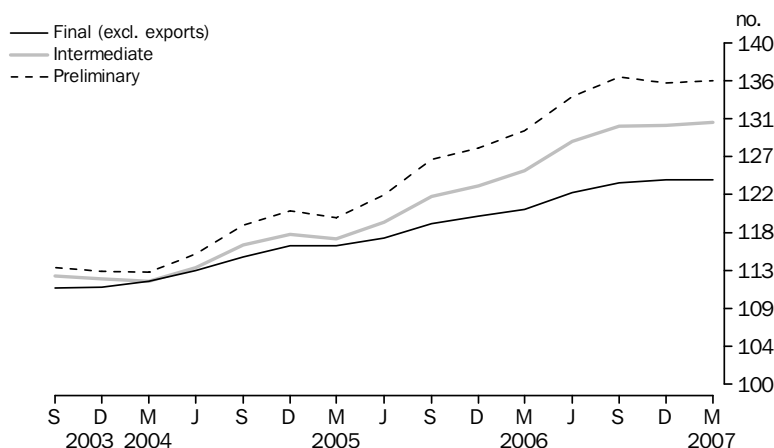
The final (stage 3) stage of production producer price index remained unchanged in the March quarter 2007. The intermediate index (Stage 2) increased by 0.3% with an increase of 0.1% for the preliminary (Stage 1) index. Through the year to March quarter 2007, the final (Stage 3) index increased by 2.8%, the intermediate (Stage 2) index increased by 4.6% and the preliminary (Stage 1) index increased by 4.5%.

The overall zero change in the final (Stage 3) index reflects an increase of 0.1% in the price of domestically produced items, offset by a fall of 1.1% in the price of imported items. The domestic component increased due to price rises for building construction and other manufacturing. These were partially offset by decreases in some components of other agriculture (bananas) and motor vehicles and parts. The imports component decreased due mainly to price falls for electronic equipment, industrial machinery, photographic and scientific equipment and tobacco products.

The increase of 0.3% in the intermediate (Stage 2) index reflects an increase of 0.7% in the price of domestically produced items and a decrease of 1.8% in the price of imported items. The domestic component increased due to price rises for the products of grain, sheep, beef & dairy cattle farming, property operator and developers, some components of other agriculture and other business services. These were partially offset by price decreases for basic non-ferrous metals (smelted or refined) and metal ores. The imports component decreased due to price falls for oil, fabricated metal products, petroleum, non-ferrous basic metals (shaped), electronic equipment, plastic products, photographic and scientific equipment and textiles. These decreases were partially offset by price increases for iron and steel.

The increase of 0.1% in the preliminary (Stage 1) index reflects an increase of 0.5% in the price of domestically produced items and a decrease of 2.3% in the price of imported items. The domestic component increased due to price rises for property operators and developers, grain, sheep, beef & dairy cattle farming, some components of other agriculture and other business services. These rises were partially offset by price decreases for basic non-ferrous metals (smelted or refined) and metal ores. The imports component decreased due to price falls for oil, non-ferrous basic metals (shaped), petroleum refining, fabricated metal products, basic non-ferrous metals (smelted or refined), plastic products and electronic equipment. These decreases were partially offset by price rises for iron and steel.

COMPARISON OF SOP INDEXES: Base: 1998-99 = 100.0



COMMENTARY *continued*

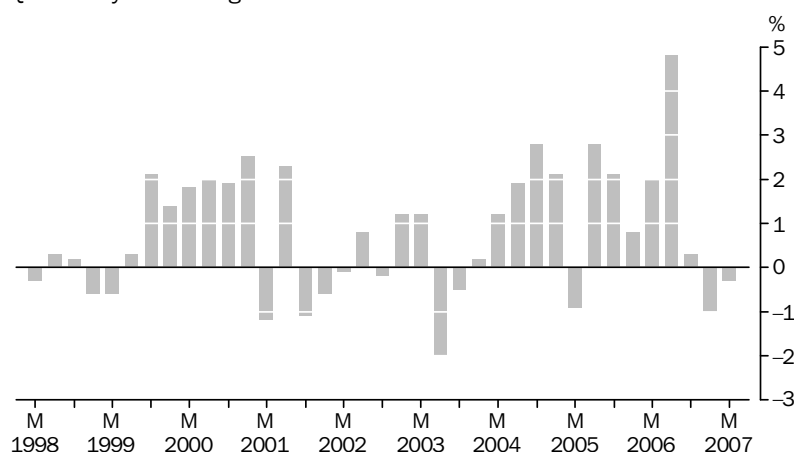
MANUFACTURING INDUSTRIES PRODUCER PRICE INDEXES

During the March quarter 2007, the prices paid by manufacturers for material inputs increased by 0.1%, while the prices they received for their outputs decreased by 0.3%. The input price index increased by 3.6% through the year to March quarter 2007 and the output price index for the same period increased by 3.8%.

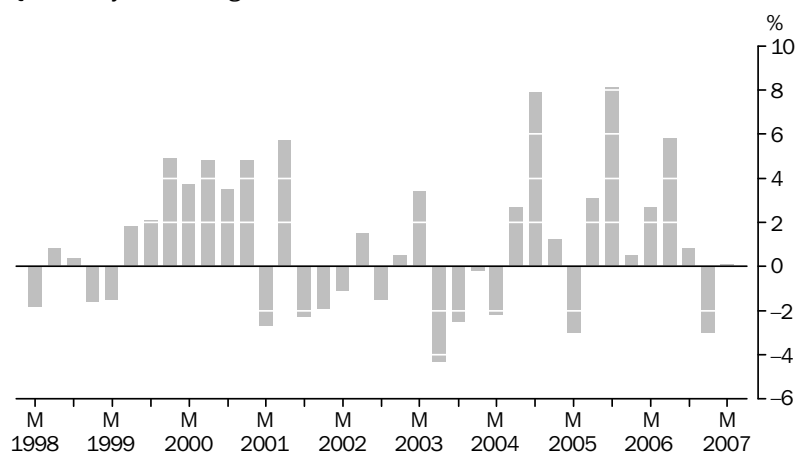
Price rises in domestic crude oil, flat rolled products of iron and steel, cattle and calves, nickel ores and concentrates and whole milk were recorded for the materials used in manufacturing industries. Price decreases for imported crude oil, copper oxides and iron ore mining provided offsets to the price increases. The increase in the price of domestic crude oil was affected by weather conditions interrupting domestic supply of crude oil, while crude oil in the international market fell.

Lower prices received for refined petroleum products, non-ferrous basic metal products (shaped) and smelted copper, silver, lead and zinc were the significant contributors to the decrease in the articles produced by the manufacturing industries index for the March quarter 2007. These decreases were partially offset by increases in the prices of basic non-ferrous metals (smelted or refined), aluminium smelting and tobacco.

ARTICLES PRODUCED BY MANUFACTURING INDUSTRIES, All groups: Quarterly % change



MATERIALS USED IN MANUFACTURING INDUSTRIES, All groups: Quarterly % change

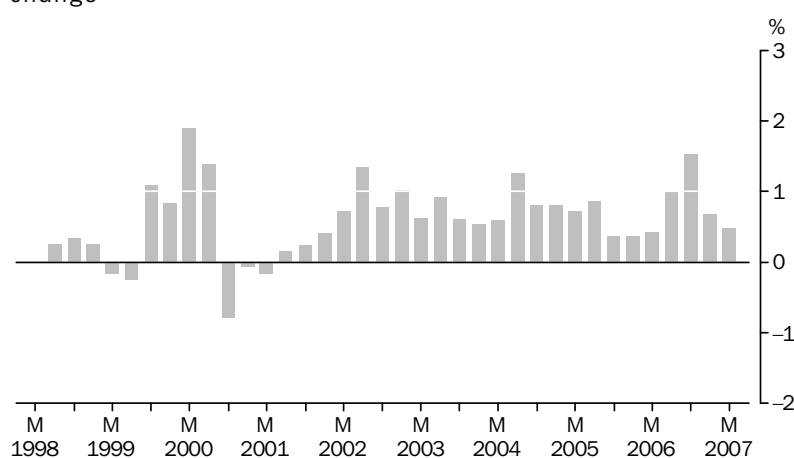


CONSTRUCTION
INDUSTRIES PRODUCER
PRICE INDEXES

The price index for materials used in house building increased by 0.5% in the March quarter 2007, following a 0.7% increase in the December quarter 2006. The most significant increases were recorded for structural timbers, windows, trusses and frames and clay bricks. These increases were partially offset by falls in the price of pipework and electrical installations. The price index of materials used in house building in Adelaide fell by 0.2%, whereas the other capital cities recorded increases, ranging from 0.3% increases in Melbourne and Brisbane to a 1.2% increase in Hobart.

Through the year to March quarter 2007 the materials used in house building price index rose by 3.7%

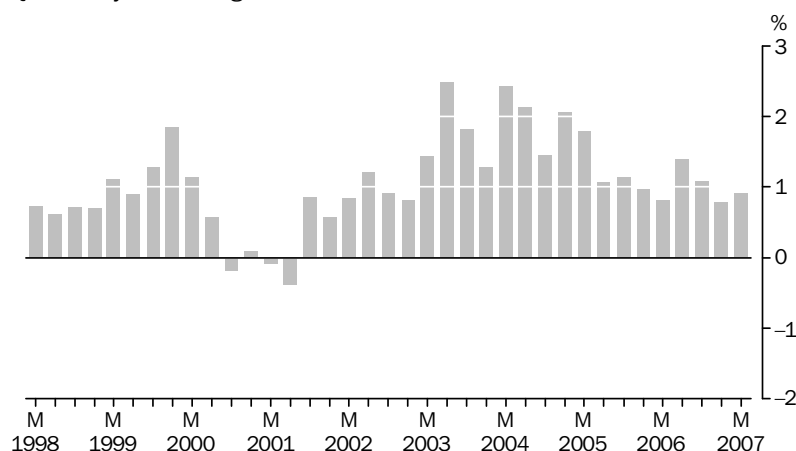
MATERIALS USED IN HOUSE BUILDING, All groups: Quarterly % change



COMMENTARY *continued*

CONSTRUCTION INDUSTRIES PRODUCER PRICE INDEXES *continued*

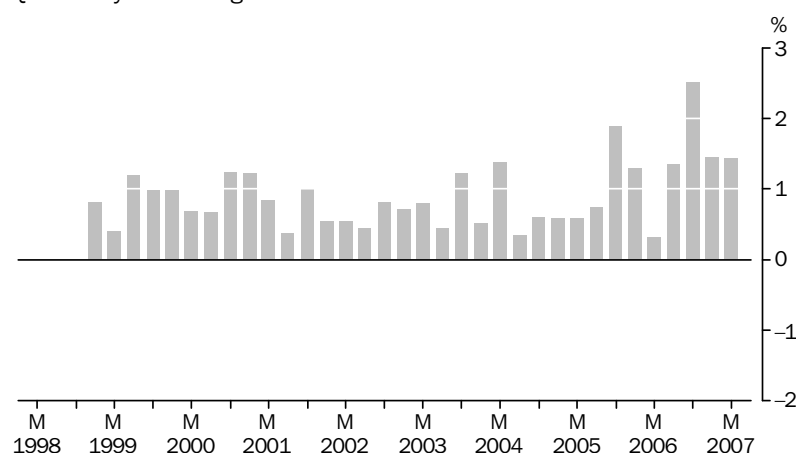
OUTPUT OF THE GENERAL CONSTRUCTION INDUSTRY, All groups: Quarterly % change



SERVICE INDUSTRIES PRODUCER PRICE INDEXES

The property & business services industries price index increased by 1.4% in the March quarter 2007 and by 6.9% through the year to March quarter 2007. The property services price index increased by 2.1% this quarter with price increases for real estate agents and commercial property operators. Through the year to March quarter 2007 the property services index rose by 9.5%.

PROPERTY AND BUSINESS SERVICES INDUSTRIES, All groups: Quarterly % change



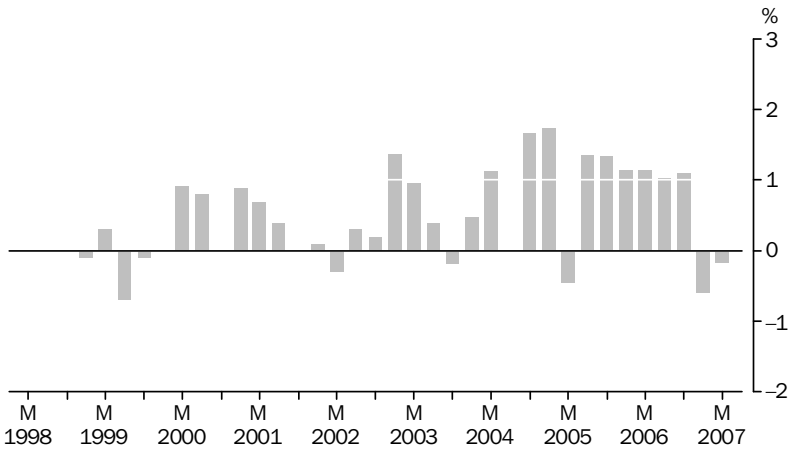
The business services index increased by 1.0% in the March quarter 2007 and by 5.3% through the year to March quarter 2007. The main contributors to the increase came from contract staff services and consultant engineering services.

The transport (freight) and storage industries index decreased by 0.2% in the March quarter 2007. The most significant contributors with price decreases were for services to water transport, international sea transport and stevedoring services. The most significant contributors with price increases were road freight transport, parking services and pipeline transport services. Through the year to March quarter 2007 the transport (freight) and storage industries index rose by 1.4%.

COMMENTARY *continued*

SERVICE INDUSTRIES
PRODUCER PRICE
INDEXES *continued*

TRANSPORT (FREIGHT) AND STORAGE INDUSTRIES, All groups:
Quarterly % change



LIST OF TABLES

page

STAGE OF PRODUCTION PRODUCER PRICE INDEXES

1	Index numbers by stage and source	12
2	Percentage change by stage and source	13
3	Final commodities by source and destination	14
4	Percentage change, final commodities by source and destination	15
5	Contribution to change in final commodities index by industry and source	16
6	Contribution to change in domestic final commodities index by industry and destination	17
7	Contribution to change in imported final commodities index by industry and destination	18
8	Contribution to change in intermediate commodities index by industry and source	19
9	Contribution to change in preliminary commodities index by industry and source	20

MANUFACTURING INDUSTRIES PRODUCER PRICE INDEXES

10	Articles produced by manufacturing industries, division index numbers and percentage changes	21
11	Articles produced by manufacturing industries, subdivision and group index numbers	22
12	Materials used in manufacturing industries, division index numbers	24
13	Materials used in manufacturing industries, division percentage changes	25
14	Materials used in manufacturing industries, subdivision and group index numbers	26

CONSTRUCTION INDUSTRIES PRODUCER PRICE INDEXES

15	Output of the general construction industry, subdivision index numbers and percentage changes	28
16	Output of the general construction industry, group and class indexes	29
17	Materials used in house building, index numbers by state capital city	30
18	Materials used in house building, percentage changes by state capital city	31
19	Materials used in building other than house building, index numbers by state capital city (Series discontinued from June quarter 2004)	32
20	Materials used in building other than house building, percentage changes by state capital city (Series discontinued from June quarter 2004)	33

MINING INDUSTRIES PRODUCER PRICE INDEXES

21	Materials used in coal mining, index numbers and percentage changes	34
-----------	---	----

SERVICE INDUSTRIES PRODUCER PRICE INDEXES

22	Output of transport (freight) and storage industries, division index numbers and percentage changes	35
-----------	---	----

LIST OF TABLES *continued*

page

SERVICE INDUSTRIES PRODUCER PRICE INDEXES *continued*

23	Output of transport (freight) and storage industries, subdivision index numbers	36
24	Output of property and business services industries, division index numbers and percentage changes	37
25	Output of property and business services industries, subdivision and group index numbers	38

ADDITIONAL TABLES AVAILABLE ON ABS WEB SITE

STAGE OF PRODUCTION PRODUCER PRICE INDEXES

26	Stage of production, index numbers, final commodities by source and destination, including exports
27	Stage of production, percentage change, final commodities by source and destination, including exports

PRICE INDEXES OF ARTICLES PRODUCED BY MANUFACTURING INDUSTRIES

28	Price indexes of articles produced by manufacturing industries, contribution of subdivisions and groups
-----------	---

PRICE INDEXES OF MATERIALS USED IN MANUFACTURING INDUSTRIES

29	Price index of materials used in manufacturing industries, contribution of materials by ANZSIC industry of origin
30	Price index of materials used in manufacturing industries, indexes of metallic materials used in the fabricated metal products industry

PRICE INDEX OF MATERIALS USED IN HOUSE BUILDING

31	Price index of materials used in house building, six state capital cities, contribution to all groups index
32	Price index of materials used in house building, six state capital cities, by materials group

PRICE INDEX OF MATERIALS USED IN BUILDING OTHER THAN HOUSE BUILDING (THE FOLLOWING SERIES WERE DISCONTINUED FROM JUNE QUARTER 2004)

33	Price index of materials used in building other than house building, six state capital cities, all groups index, contribution of major building materials
34	Price index of materials used in building other than house building, six state capital cities, selected ANZSIC groups, index numbers
35	Price index of materials used in building other than house building, six state capital cities, selected building materials, index numbers
36	Price index of materials used in building other than house building, six state capital cities, selected major building materials, index numbers, Sydney and Melbourne

LIST OF TABLES *continued*

page

ADDITIONAL TABLES AVAILABLE ON ABS WEB SITE *continued*

PRICE INDEX OF MATERIALS USED IN BUILDING OTHER THAN HOUSE BUILDING (THE FOLLOWING SERIES WERE DISCONTINUED FROM JUNE QUARTER 2004) *continued*

- 37** Price index of materials used in building other than house building, six state capital cities, selected major building materials, index numbers, Brisbane and Adelaide
- 38** Price index of materials used in building other than house building, six state capital cities, selected major building materials, index numbers, Perth and Hobart
- 39** Price index of materials used in building other than house building, six state capital cities, special series, index numbers, weighted average of six state capital cities
- 40** Price index of materials used in building other than house building, six state capital cities, special series, index numbers, Sydney and Melbourne
- 41** Price index of materials used in building other than house building, six state capital cities, special series, index numbers, Brisbane and Adelaide
- 42** Price index of materials used in building other than house building, six state capital cities, special series, index numbers, Perth and Hobart

PRODUCER PRICE INDEXES FOR SELECTED SERVICE INDUSTRIES

- 43** Producer price indexes for selected service industries, transport (freight) and storage division index, subdivision and group contributions
- 44** Producer price indexes for selected service industries, property and business services division, subdivision and group contributions
- 45** Producer price indexes for selected service industries, transport (freight) and storage subdivision group and class indexes
- 46** Producer price indexes for selected service industries, property and business services subdivision group and class indexes

PRICE INDEXES OF COPPER MATERIALS

- 47** Copper materials used in the manufacture of electrical equipment, index numbers and percentage changes

PRICE INDEX OF MATERIALS USED IN BUILDING OTHER THAN HOUSE BUILDING, SPECIAL SERIES, PERTH

- 48** Materials used in building other than house building, special series, index numbers, Perth

PRICE INDEXES FOR ASPHALT SUPPLIED AND PLACED

- 49** Asphalt supplied and placed, index numbers, Weighted average of six State capital cities

STAGE OF PRODUCTION(a): Index numbers

Period	PRELIMINARY			INTERMEDIATE			FINAL(b)		
	Domestic	Imports	Total	Domestic	Imports	Total	Domestic	Imports	Total
2002-03	114.3	117.4	114.6	113.6	112.1	113.3	113.7	97.5	110.5
2003-04	115.3	105.6	113.8	114.9	99.9	112.7	118.5	86.7	112.0
2004-05	121.1	115.4	120.2	119.8	104.4	117.5	124.1	84.6	116.1
2005-06	129.5	129.5	129.4	126.7	112.6	124.7	129.5	84.5	120.4
2002									
June	112.1	117.1	112.7	111.5	112.8	111.7	111.3	100.3	109.2
September	112.3	118.2	113.0	111.5	113.8	111.8	111.9	100.5	109.7
December	114.2	120.0	114.9	113.4	114.5	113.6	112.9	99.6	110.3
2003									
March	115.8	119.3	116.2	115.0	113.0	114.7	114.6	97.1	111.1
June	114.7	112.1	114.2	114.3	106.9	113.2	115.2	92.9	110.7
September	114.7	108.1	113.7	114.4	103.1	112.7	116.7	89.9	111.3
December	114.6	105.0	113.2	114.4	100.1	112.3	117.6	87.1	111.4
2004									
March	115.2	100.4	113.1	115.0	95.3	112.1	119.3	83.9	112.1
June	116.6	108.7	115.3	115.9	101.1	113.7	120.3	85.8	113.3
September	119.4	114.7	118.6	118.2	105.4	116.3	122.0	86.8	114.9
December	121.3	115.1	120.3	119.9	104.3	117.6	124.1	85.2	116.2
2005									
March	120.8	112.1	119.5	119.6	102.0	117.0	124.6	83.3	116.2
June	122.7	119.6	122.2	121.3	106.0	119.0	125.8	83.2	117.1
September	126.6	125.2	126.3	124.1	109.4	122.0	127.6	84.2	118.8
December	128.0	127.0	127.7	125.3	110.6	123.2	128.8	84.3	119.7
2006									
March	129.9	129.8	129.7	127.1	113.1	125.0	129.7	84.5	120.5
June	133.4	136.1	133.7	130.4	117.4	128.5	132.0	85.1	122.4
September	135.7	139.0	136.0	132.2	118.7	130.2	133.7	84.2	123.6
December	136.2	130.5	135.3	133.2	113.7	130.3	134.4	83.0	123.9
2007									
March	136.9	127.5	135.5	134.1	111.6	130.7	134.6	82.1	123.9

(a) Reference base of each index: 1998-99 = 100.0.

(b) Excluding exports.

STAGE OF PRODUCTION: **Percentage change**

Period	PRELIMINARY			INTERMEDIATE			FINAL(a)		
	Domestic	Imports	Total	Domestic	Imports	Total	Domestic	Imports	Total
PERCENTAGE CHANGE FROM PREVIOUS YEAR									
2002-03	2.2	-2.4	1.5	2.1	-3.3	1.3	3.4	-6.0	1.6
2003-04	0.9	-10.1	-0.7	1.1	-10.9	-0.5	4.2	-11.1	1.4
2004-05	5.0	9.3	5.6	4.3	4.5	4.3	4.7	-2.4	3.7
2005-06	6.9	12.2	7.7	5.8	7.9	6.1	4.4	-0.1	3.7
PERCENTAGE CHANGE FROM PREVIOUS QUARTER									
2002									
September	0.2	0.9	0.3	0.0	0.9	0.1	0.5	0.2	0.5
December	1.7	1.5	1.7	1.7	0.6	1.6	0.9	-0.9	0.5
2003									
March	1.4	-0.6	1.1	1.4	-1.3	1.0	1.5	-2.5	0.7
June	-0.9	-6.0	-1.7	-0.6	-5.4	-1.3	0.5	-4.3	-0.4
September	0.0	-3.6	-0.4	0.1	-3.6	-0.4	1.3	-3.2	0.5
December	-0.1	-2.9	-0.4	0.0	-2.9	-0.4	0.8	-3.1	0.1
2004									
March	0.5	-4.4	-0.1	0.5	-4.8	-0.2	1.4	-3.7	0.6
June	1.2	8.3	1.9	0.8	6.1	1.4	0.8	2.3	1.1
September	2.4	5.5	2.9	2.0	4.3	2.3	1.4	1.2	1.4
December	1.6	0.3	1.4	1.4	-1.0	1.1	1.7	-1.8	1.1
2005									
March	-0.4	-2.6	-0.7	-0.3	-2.2	-0.5	0.4	-2.2	0.0
June	1.6	6.7	2.3	1.4	3.9	1.7	1.0	-0.1	0.8
September	3.2	4.7	3.4	2.3	3.2	2.5	1.4	1.2	1.5
December	1.1	1.4	1.1	1.0	1.1	1.0	0.9	0.1	0.8
2006									
March	1.5	2.2	1.6	1.4	2.3	1.5	0.7	0.2	0.7
June	2.7	4.9	3.1	2.6	3.8	2.8	1.8	0.7	1.6
September	1.7	2.1	1.7	1.4	1.1	1.3	1.3	-1.1	1.0
December	0.4	-6.1	-0.5	0.8	-4.2	0.1	0.5	-1.4	0.2
2007									
March	0.5	-2.3	0.1	0.7	-1.8	0.3	0.1	-1.1	0.0
PERCENTAGE CHANGE FROM CORRESPONDING QUARTER OF PREVIOUS YEAR									
2002									
September	0.1	-5.2	-0.7	0.3	-4.3	-0.4	2.7	-4.0	1.4
December	2.1	-2.1	1.4	1.7	-3.0	1.2	3.2	-6.1	1.4
2003									
March	4.2	2.1	3.8	3.6	-0.8	3.0	3.9	-6.3	1.9
June	2.3	-4.3	1.3	2.5	-5.2	1.3	3.5	-7.4	1.4
September	2.1	-8.5	0.6	2.6	-9.4	0.8	4.3	-10.5	1.5
December	0.4	-12.5	-1.5	0.9	-12.6	-1.1	4.2	-12.6	1.0
2004									
March	-0.5	-15.8	-2.7	0.0	-15.7	-2.3	4.1	-13.6	0.9
June	1.7	-3.0	1.0	1.4	-5.4	0.4	4.4	-7.6	2.3
September	4.1	6.1	4.3	3.3	2.2	3.2	4.5	-3.4	3.2
December	5.8	9.6	6.3	4.8	4.2	4.7	5.5	-2.2	4.3
2005									
March	4.9	11.7	5.7	4.0	7.0	4.4	4.4	-0.7	3.7
June	5.2	10.0	6.0	4.7	4.8	4.7	4.6	-3.0	3.4
September	6.0	9.2	6.5	5.0	3.8	4.9	4.6	-3.0	3.4
December	5.5	10.3	6.2	4.5	6.0	4.8	3.8	-1.1	3.0
2006									
March	7.5	15.8	8.5	6.3	10.9	6.8	4.1	1.4	3.7
June	8.7	13.8	9.4	7.5	10.8	8.0	4.9	2.3	4.5
September	7.2	11.0	7.7	6.5	8.5	6.7	4.8	0.0	4.0
December	6.4	2.8	6.0	6.3	2.8	5.8	4.3	-1.5	3.5
2007									
March	5.4	-1.8	4.5	5.5	-1.3	4.6	3.8	-2.8	2.8

(a) Excluding exports.

STAGE OF PRODUCTION(a): Final Commodities

Period	DOMESTIC(b)			IMPORTS			TOTAL(b)		
	Consumer	Capital	Total	Consumer	Capital	Total	Consumer	Capital	Total
2002-03	112.3	115.0	113.7	101.0	93.6	97.5	109.9	111.0	110.5
2003-04	114.4	122.0	118.5	91.3	81.7	86.7	109.3	114.4	112.0
2004-05	118.1	129.1	124.1	90.4	78.5	84.6	112.0	119.6	116.1
2005-06	123.3	134.7	129.5	92.5	76.1	84.5	116.4	123.7	120.4
2002									
June	110.6	112.1	111.3	103.4	96.8	100.3	109.2	109.2	109.2
September	110.7	113.1	111.9	103.1	97.5	100.5	109.2	110.2	109.7
December	111.9	114.0	112.9	102.8	96.0	99.6	110.1	110.6	110.3
2003									
March	113.9	115.4	114.6	101.3	92.4	97.1	111.2	111.1	111.1
June	112.6	117.5	115.2	96.8	88.5	92.9	109.2	112.0	110.7
September	113.6	119.3	116.7	94.2	85.3	89.9	109.4	112.9	111.3
December	114.3	120.5	117.6	91.5	82.4	87.1	109.3	113.3	111.4
2004									
March	114.9	123.0	119.3	88.7	78.7	83.9	109.1	114.6	112.1
June	114.6	125.0	120.3	90.9	80.4	85.8	109.3	116.6	113.3
September	116.8	126.4	122.0	92.1	81.2	86.8	111.4	117.9	114.9
December	118.8	128.5	124.1	90.8	79.2	85.2	112.6	119.2	116.2
2005									
March	117.8	130.2	124.6	88.8	77.4	83.3	111.3	120.3	116.2
June	119.0	131.3	125.8	89.9	76.1	83.2	112.5	120.9	117.1
September	121.3	132.8	127.6	91.7	76.2	84.2	114.7	122.2	118.8
December	122.4	134.1	128.8	91.7	76.5	84.3	115.5	123.2	119.7
2006									
March	123.3	135.0	129.7	92.8	75.9	84.5	116.5	123.9	120.5
June	126.2	136.7	132.0	93.9	75.9	85.1	119.0	125.3	122.4
September	128.2	138.3	133.7	93.2	74.8	84.2	120.3	126.4	123.6
December	127.8	139.8	134.4	91.5	74.1	83.0	119.7	127.4	123.9
2007									
March	126.8	140.9	134.6	90.7	73.1	82.1	118.7	128.2	123.9

(a) Reference base of each index: 1998-99 = 100.0.

(b) Excluding exports.

STAGE OF PRODUCTION: Final commodities percentage change

Period	DOMESTIC(a)			IMPORTS			TOTAL(a)		
	Consumer	Capital	Total	Consumer	Capital	Total	Consumer	Capital	Total
PERCENTAGE CHANGE FROM PREVIOUS YEAR									
2002-03	2.7	3.9	3.4	-5.1	-7.1	-6.0	1.0	2.0	1.6
2003-04	1.9	6.1	4.2	-9.6	-12.7	-11.1	-0.5	3.1	1.4
2004-05	3.2	5.8	4.7	-1.0	-3.9	-2.4	2.5	4.5	3.7
2005-06	4.4	4.3	4.4	2.3	-3.1	-0.1	3.9	3.4	3.7
PERCENTAGE CHANGE FROM PREVIOUS QUARTER									
2002									
September	0.1	0.9	0.5	-0.3	0.7	0.2	0.0	0.9	0.5
December	1.1	0.8	0.9	-0.3	-1.5	-0.9	0.8	0.4	0.5
2003									
March	1.8	1.2	1.5	-1.5	-3.8	-2.5	1.0	0.5	0.7
June	-1.1	1.8	0.5	-4.4	-4.2	-4.3	-1.8	0.8	-0.4
September	0.9	1.5	1.3	-2.7	-3.6	-3.2	0.2	0.8	0.5
December	0.6	1.0	0.8	-2.9	-3.4	-3.1	-0.1	0.4	0.1
2004									
March	0.5	2.1	1.4	-3.1	-4.5	-3.7	-0.2	1.1	0.6
June	-0.3	1.6	0.8	2.5	2.2	2.3	0.2	1.7	1.1
September	1.9	1.1	1.4	1.3	1.0	1.2	1.9	1.1	1.4
December	1.7	1.7	1.7	-1.4	-2.5	-1.8	1.1	1.1	1.1
2005									
March	-0.8	1.3	0.4	-2.2	-2.3	-2.2	-1.2	0.9	0.0
June	1.0	0.8	1.0	1.2	-1.7	-0.1	1.1	0.5	0.8
September	1.9	1.1	1.4	2.0	0.1	1.2	2.0	1.1	1.5
December	0.9	1.0	0.9	0.0	0.4	0.1	0.7	0.8	0.8
2006									
March	0.7	0.7	0.7	1.2	-0.8	0.2	0.9	0.6	0.7
June	2.4	1.3	1.8	1.2	0.0	0.7	2.1	1.1	1.6
September	1.6	1.2	1.3	-0.7	-1.4	-1.1	1.1	0.9	1.0
December	-0.3	1.1	0.5	-1.8	-0.9	-1.4	-0.5	0.8	0.2
2007									
March	-0.8	0.8	0.1	-0.9	-1.3	-1.1	-0.8	0.6	0.0
PERCENTAGE CHANGE FROM CORRESPONDING QUARTER OF PREVIOUS YEAR									
2002									
September	1.9	3.3	2.7	-3.6	-4.5	-4.0	0.9	1.9	1.4
December	2.8	3.5	3.2	-5.2	-7.3	-6.1	1.3	1.6	1.4
2003									
March	3.9	4.0	3.9	-5.0	-7.8	-6.3	2.0	1.9	1.9
June	1.8	4.8	3.5	-6.4	-8.6	-7.4	0.0	2.6	1.4
September	2.6	5.5	4.3	-8.6	-12.5	-10.5	0.2	2.5	1.5
December	2.1	5.7	4.2	-11.0	-14.2	-12.6	-0.7	2.4	1.0
2004									
March	0.9	6.6	4.1	-12.4	-14.8	-13.6	-1.9	3.2	0.9
June	1.8	6.4	4.4	-6.1	-9.2	-7.6	0.1	4.1	2.3
September	2.8	6.0	4.5	-2.2	-4.8	-3.4	1.8	4.4	3.2
December	3.9	6.6	5.5	-0.8	-3.9	-2.2	3.0	5.2	4.3
2005									
March	2.5	5.9	4.4	0.1	-1.7	-0.7	2.0	5.0	3.7
June	3.8	5.0	4.6	-1.1	-5.3	-3.0	2.9	3.7	3.4
September	3.9	5.1	4.6	-0.4	-6.2	-3.0	3.0	3.6	3.4
December	3.0	4.4	3.8	1.0	-3.4	-1.1	2.6	3.4	3.0
2006									
March	4.7	3.7	4.1	4.5	-1.9	1.4	4.7	3.0	3.7
June	6.1	4.1	4.9	4.4	-0.3	2.3	5.8	3.6	4.5
September	5.7	4.1	4.8	1.6	-1.8	0.0	4.9	3.4	4.0
December	4.4	4.3	4.3	-0.2	-3.1	-1.5	3.6	3.4	3.5
2007									
March	2.8	4.4	3.8	-2.3	-3.7	-2.8	1.9	3.5	2.8

(a) Excluding exports

STAGE OF PRODUCTION(a): Final commodities index points change

ANZSIC		DOMESTIC			IMPORTS			TOTAL		
		Dec Qtr	Mar Qtr	Change	Dec Qtr	Mar Qtr	Change	Dec Qtr	Mar Qtr	Change
		2006	2007		2006	2007		2006	2007	
012-013	Grain, sheep, beef & dairy cattle farming	0.18	0.18	0.00	0.14	0.14	0.00
011,014-016	Other agriculture	2.94	2.37	-0.57	2.33	1.88	-0.45
04	Commercial fishing	1.10	1.02	-0.08	0.87	0.81	-0.06
211	Meat & meat product mfg	3.20	3.16	-0.04	2.54	2.51	-0.03
212	Dairy product mfg	3.07	3.11	0.04	1.03	0.99	-0.04	2.65	2.67	0.02
213	Fruit & vegetable processing	1.89	1.90	0.01	1.53	1.60	0.07	1.81	1.84	0.03
214	Oil & fat mfg	0.56	0.50	-0.06	0.12	0.10	-0.02
215	Flour mill & cereal food mfg	0.92	0.95	0.03	0.73	0.75	0.02
216	Bakery product mfg	2.29	2.38	0.09	1.82	1.89	0.07
217	Other food mfg	3.76	3.74	-0.02	3.73	3.70	-0.03	3.76	3.73	-0.03
218	Beverage & malt mfg	4.15	4.19	0.04	1.89	1.90	0.01	3.68	3.72	0.04
219	Tobacco product mfg	0.97	1.04	0.07	2.18	2.06	-0.12	1.23	1.25	0.02
221	Textile fibre, yarn & woven fabric mfg	0.32	0.32	0.00	0.56	0.54	-0.02	0.37	0.37	0.00
222	Textile product mfg	0.57	0.55	-0.02	0.62	0.61	-0.01	0.58	0.57	-0.01
223	Knitting mills	0.30	0.30	0.00	0.52	0.51	-0.01	0.35	0.35	0.00
224	Clothing mfg	1.93	1.93	0.00	3.58	3.58	0.00	2.27	2.28	0.01
225	Footwear mfg	0.26	0.26	0.00	1.12	1.10	-0.02	0.44	0.43	-0.01
226	Leather & leather product mfg	0.96	0.95	-0.01	0.20	0.20	0.00
232-233	Other wood, paper & paper product mfg	0.76	0.78	0.02	0.61	0.62	0.01
241	Printing & services to printing	0.39	0.39	0.00	0.08	0.08	0.00	0.32	0.33	0.01
242	Publishing	1.41	1.43	0.02	0.86	0.88	0.02	1.30	1.32	0.02
243	Recorded media mfg & publishing	0.16	0.17	0.01	0.88	0.86	-0.02	0.31	0.31	0.00
251	Petroleum refining	3.41	3.44	0.03	1.87	1.83	-0.04	3.10	3.11	0.01
253	Basic chemical mfg	0.42	0.44	0.02	0.09	0.09	0.00
254	Other chemical product mfg	2.23	2.23	0.00	4.40	4.41	0.01	2.69	2.69	0.00
255	Rubber product mfg	0.11	0.12	0.01	0.65	0.65	0.00	0.23	0.23	0.00
256	Plastic product mfg	0.95	0.96	0.01	0.83	0.81	-0.02	0.92	0.93	0.01
271	Iron & steel mfg	0.12	0.12	0.00	0.03	0.03	0.00
273	Non-ferrous basic metal product mfg	0.21	0.22	0.01	0.04	0.05	0.01
275	Sheet metal product mfg	0.31	0.32	0.01	0.25	0.25	0.00
276	Fabricated metal product mfg	0.21	0.21	0.00	1.05	1.08	0.03	0.38	0.39	0.01
281	Motor vehicle & part mfg	5.97	5.78	-0.19	17.23	17.27	0.04	8.33	8.18	-0.15
282	Other transport equipment mfg	0.56	0.57	0.01	4.26	4.22	-0.04	1.33	1.33	0.00
283	Photographic & scientific equipment mfg	0.21	0.21	0.00	3.49	3.36	-0.13	0.89	0.86	-0.03
284	Electronic equipment mfg	0.50	0.50	0.00	7.72	7.44	-0.28	2.01	1.95	-0.06
285	Electrical equipment & household appliance mfg	1.61	1.61	0.00	3.57	3.60	0.03	2.02	2.03	0.01
286	Industrial machinery & equipment mfg	1.79	1.80	0.01	11.89	11.70	-0.19	3.90	3.87	-0.03
29	Other mfg	3.25	3.35	0.10	5.18	5.11	-0.07	3.66	3.73	0.07
36-37	Electricity, gas & water supply	7.60	7.66	0.06	6.03	6.08	0.05
411	Building construction	54.67	55.19	0.52	43.36	43.77	0.41
412	Non-building construction	5.36	5.39	0.03	4.25	4.27	0.02
571	Accommodation	1.58	1.63	0.05	1.25	1.29	0.04
611	Road freight transport	1.72	1.73	0.01	1.37	1.37	0.00
620	Rail transport	0.43	0.43	0.00	0.34	0.34	0.00
630-640	Water, air & space transport	0.36	0.35	-0.01	0.28	0.28	0.00
66	Services to transport	1.94	1.86	-0.08	1.54	1.48	-0.06
772	Real estate agents	3.24	3.31	0.07	2.57	2.62	0.05
782	Technical services	1.15	1.17	0.02	0.91	0.93	0.02
783	Computer services	3.91	3.90	-0.01	3.11	3.09	-0.02
784	Legal & accounting services	0.69	0.69	0.00	0.55	0.55	0.00
Total		134.4	134.6	0.2	83.0	82.1	-0.9	123.9	123.9	0.0

.. not applicable

(a) Reference base of each index: 1998-99 = 100.0.

STAGE OF PRODUCTION(a): Domestic final commodities index points change

ANZSIC		CONSUMER			CAPITAL			TOTAL		
		Dec Qtr	Mar Qtr	Change	Dec Qtr	Mar Qtr	Change	Dec Qtr	Mar Qtr	Change
		2006	2007		2006	2007		2006	2007	
012-013	Grain, sheep, beef & dairy cattle farming	0.41	0.41	0.00	0.18	0.18	0.00
011,014-016	Other agriculture	6.72	5.42	-1.30	2.94	2.37	-0.57
04	Commercial fishing	2.51	2.32	-0.19	1.10	1.02	-0.08
211	Meat & meat product mfg	7.33	7.23	-0.10	3.20	3.16	-0.04
212	Dairy product mfg	7.02	7.11	0.09	3.07	3.11	0.04
213	Fruit & vegetable processing	4.31	4.34	0.03	1.89	1.90	0.01
215	Flour mill & cereal food mfg	2.11	2.16	0.05	0.92	0.95	0.03
216	Bakery product mfg	5.24	5.44	0.20	2.29	2.38	0.09
217	Other food mfg	8.61	8.54	-0.07	3.76	3.74	-0.02
218	Beverage & malt mfg	9.48	9.59	0.11	4.15	4.19	0.04
219	Tobacco product mfg	2.22	2.38	0.16	0.97	1.04	0.07
221	Textile fibre, yarn & woven fabric mfg	0.73	0.73	0.00	0.32	0.32	0.00
222	Textile product mfg	1.30	1.27	-0.03	0.57	0.55	-0.02
223	Knitting mills	0.68	0.70	0.02	0.30	0.30	0.00
224	Clothing mfg	4.40	4.41	0.01	1.93	1.93	0.00
225	Footwear mfg	0.59	0.59	0.00	0.26	0.26	0.00
232-233	Other wood, paper & paper product mfg	1.75	1.79	0.04	0.76	0.78	0.02
241	Printing & services to printing	0.89	0.89	0.00	0.39	0.39	0.00
242	Publishing	3.23	3.28	0.05	1.41	1.43	0.02
243	Recorded media mfg & publishing	0.37	0.39	0.02	0.16	0.17	0.01
251	Petroleum refining	7.80	7.87	0.07	3.41	3.44	0.03
254	Other chemical product mfg	5.10	5.11	0.01	2.23	2.23	0.00
255	Rubber product mfg	0.26	0.26	0.00	0.11	0.12	0.01
256	Plastic product mfg	2.16	2.19	0.03	0.95	0.96	0.01
275	Sheet metal product mfg	0.56	0.56	0.00	0.31	0.32	0.01
276	Fabricated metal product mfg	0.37	0.37	0.00	0.21	0.21	0.00
281	Motor vehicle & part mfg	6.04	5.80	-0.24	5.93	5.78	-0.15	5.97	5.78	-0.19
282	Other transport equipment mfg	0.40	0.41	0.01	0.69	0.69	0.00	0.56	0.57	0.01
283	Photographic & scientific equipment mfg	0.37	0.37	0.00	0.21	0.21	0.00
284	Electronic equipment mfg	0.19	0.19	0.00	0.75	0.74	-0.01	0.50	0.50	0.00
285	Electrical equipment & household appliance mfg	2.42	2.41	-0.01	0.99	0.99	0.00	1.61	1.61	0.00
286	Industrial machinery & equipment mfg	3.19	3.21	0.02	1.79	1.80	0.01
29	Other mfg	2.35	2.37	0.02	3.96	4.13	0.17	3.25	3.35	0.10
36-37	Electricity, gas & water supply	17.38	17.53	0.15	7.60	7.66	0.06
411	Building construction	97.40	98.32	0.92	54.67	55.19	0.52
412	Non-building construction	9.55	9.60	0.05	5.36	5.39	0.03
571	Accommodation	3.62	3.72	0.10	1.58	1.63	0.05
611	Road freight transport	3.94	3.95	0.01	1.72	1.73	0.01
620	Rail transport	0.98	0.99	0.01	0.43	0.43	0.00
630-640	Water, air & space transport	0.81	0.80	-0.01	0.36	0.35	-0.01
66	Services to transport	4.44	4.25	-0.19	1.94	1.86	-0.08
772	Real estate agents	5.78	5.89	0.11	3.24	3.31	0.07
782	Technical services	2.04	2.09	0.05	1.15	1.17	0.02
783	Computer services	6.97	6.95	-0.02	3.91	3.90	-0.01
784	Legal & accounting services	1.23	1.24	0.01	0.69	0.69	0.00
Total		127.8	126.8	-1.0	139.8	140.9	1.1	134.4	134.6	0.2

.. not applicable

(a) Reference base of each index: 1998-99 = 100.0.

STAGE OF PRODUCTION(a): Imported final commodities index points change

ANZSIC	CONSUMER			CAPITAL			TOTAL		
	Dec Qtr	Mar Qtr	Change	Dec Qtr	Mar Qtr	Change	Dec Qtr	Mar Qtr	Change
	2006	2007		2006	2007		2006	2007	
212 Dairy product mfg	2.04	1.96	-0.08	1.03	0.99	-0.04
213 Fruit & vegetable processing	3.04	3.18	0.14	1.53	1.60	0.07
214 Oil & fat mfg	1.11	0.98	-0.13	0.56	0.50	-0.06
217 Other food mfg	7.40	7.34	-0.06	3.73	3.70	-0.03
218 Beverage & malt mfg	3.76	3.76	0.00	1.89	1.90	0.01
219 Tobacco product mfg	4.33	4.09	-0.24	2.18	2.06	-0.12
221 Textile fibre, yarn & woven fabric mfg	1.11	1.07	-0.04	0.56	0.54	-0.02
222 Textile product mfg	1.24	1.22	-0.02	0.62	0.61	-0.01
223 Knitting mills	1.04	1.01	-0.03	0.52	0.51	-0.01
224 Clothing mfg	7.12	7.11	-0.01	3.58	3.58	0.00
225 Footwear mfg	2.22	2.18	-0.04	1.12	1.10	-0.02
226 Leather & leather product mfg	1.90	1.88	-0.02	0.96	0.95	-0.01
241 Printing & services to printing	0.16	0.16	0.00	0.08	0.08	0.00
242 Publishing	1.71	1.75	0.04	0.86	0.88	0.02
243 Recorded media mfg & publishing	1.75	1.70	-0.05	0.88	0.86	-0.02
251 Petroleum refining	3.70	3.64	-0.06	1.87	1.83	-0.04
253 Basic chemical mfg	0.83	0.88	0.05	0.42	0.44	0.02
254 Other chemical product mfg	8.73	8.76	0.03	4.40	4.41	0.01
255 Rubber product mfg	1.29	1.28	-0.01	0.65	0.65	0.00
256 Plastic product mfg	1.65	1.62	-0.03	0.83	0.81	-0.02
271 Iron & steel mfg	0.24	0.25	0.01	0.12	0.12	0.00
273 Non-ferrous basic metal product mfg	0.42	0.44	0.02	0.21	0.22	0.01
276 Fabricated metal product mfg	2.09	2.15	0.06	1.05	1.08	0.03
281 Motor vehicle & part mfg	12.45	12.54	0.09	22.01	22.00	-0.01	17.23	17.27	0.04
282 Other transport equipment mfg	2.37	2.34	-0.03	6.17	6.10	-0.07	4.26	4.22	-0.04
283 Photographic & scientific equipment mfg	2.34	2.26	-0.08	4.65	4.47	-0.18	3.49	3.36	-0.13
284 Electronic equipment mfg	3.18	3.09	-0.09	12.29	11.81	-0.48	7.72	7.44	-0.28
285 Electrical equipment & household appliance mfg	3.86	3.87	0.01	3.27	3.32	0.05	3.57	3.60	0.03
286 Industrial machinery & equipment mfg	23.87	23.48	-0.39	11.89	11.70	-0.19
29 Other mfg	8.42	8.20	-0.22	1.89	1.97	0.08	5.18	5.11	-0.07
Total	91.5	90.7	-0.8	74.1	73.1	-1.0	83.0	82.1	-0.9

.. not applicable

(a) Reference base of each index: 1998-99 = 100.0.

STAGE OF PRODUCTION(a): Intermediate commodities index points change

ANZSIC		DOMESTIC			IMPORTS			TOTAL		
		Dec Qtr	Mar Qtr	Change	Dec Qtr	Mar Qtr	Change	Dec Qtr	Mar Qtr	Change
		2006	2007		2006	2007		2006	2007	
012-013	Grain, sheep, beef & dairy cattle farming	7.22	7.50	0.28	6.16	6.41	0.25
011,014-016	Other agriculture	3.42	3.61	0.19	2.92	3.08	0.16
02	Services to agriculture; hunting & trapping	0.16	0.16	0.00	0.14	0.13	-0.01
04	Commercial fishing	0.36	0.35	-0.01	0.30	0.30	0.00
110	Coal mining	1.23	1.23	0.00	1.05	1.05	0.00
120	Oil & gas extraction	2.36	2.34	-0.02	16.68	15.53	-1.15	4.44	4.26	-0.18
131	Metal ore mining	3.46	3.29	-0.17	1.69	1.75	0.06	3.20	3.07	-0.13
14	Other mining	1.16	1.16	0.00	0.32	0.27	-0.05	1.04	1.03	-0.01
211	Meat & meat product mfg	1.98	1.95	-0.03	1.69	1.67	-0.02
212	Dairy product mfg	1.01	1.03	0.02	0.79	0.76	-0.03	0.98	0.99	0.01
213-214	Fruit & vegetable processing; oil & fat mfg	0.24	0.25	0.01	0.79	0.72	-0.07	0.32	0.32	0.00
215	Flour mill & cereal food mfg	0.85	0.90	0.05	0.72	0.77	0.05
216	Bakery product mfg	0.20	0.20	0.00	0.17	0.17	0.00
217	Other food mfg	1.09	1.12	0.03	0.70	0.70	0.00	1.03	1.06	0.03
218	Beverage & malt mfg	0.81	0.83	0.02	0.60	0.60	0.00	0.78	0.80	0.02
22	Textile, clothing, footwear & leather mfg	1.53	1.52	-0.01	7.12	7.00	-0.12	2.35	2.32	-0.03
231	Log sawmilling & timber dressing	0.94	0.94	0.00	1.74	1.75	0.01	1.06	1.06	0.00
232	Other wood product mfg	2.15	2.18	0.03	0.84	0.83	-0.01	1.96	1.98	0.02
233	Paper & paper product mfg	1.37	1.41	0.04	2.89	2.90	0.01	1.59	1.63	0.04
241	Printing & services to printing	2.37	2.39	0.02	2.02	2.04	0.02
242	Publishing	3.09	3.10	0.01	2.64	2.65	0.01
251	Petroleum refining	4.01	4.01	0.00	5.61	5.44	-0.17	4.24	4.22	-0.02
253	Basic chemical mfg	1.47	1.44	-0.03	8.18	8.24	0.06	2.44	2.43	-0.01
254	Other chemical product mfg	2.07	2.07	0.00	4.08	4.08	0.00	2.36	2.36	0.00
255	Rubber product mfg	0.55	0.55	0.00	2.80	2.79	-0.01	0.87	0.88	0.01
256	Plastic product mfg	2.14	2.18	0.04	3.33	3.20	-0.13	2.31	2.32	0.01
26	Non-metallic mineral product mfg	4.53	4.53	0.00	2.95	2.96	0.01	4.30	4.30	0.00
271	Iron & steel mfg	3.63	3.61	-0.02	4.97	5.31	0.34	3.82	3.86	0.04
272	Basic non-ferrous metal mfg	3.37	3.15	-0.22	1.25	1.14	-0.11	3.06	2.85	-0.21
273	Non-ferrous basic metal product mfg	0.43	0.43	0.00	1.87	1.71	-0.16	0.64	0.62	-0.02
274	Structural metal product mfg	3.09	3.11	0.02	0.05	0.05	0.00	2.64	2.66	0.02
275	Sheet metal product mfg	1.32	1.32	0.00	0.16	0.16	0.00	1.15	1.15	0.00
276	Fabricated metal product mfg	1.35	1.33	-0.02	4.44	4.23	-0.21	1.80	1.75	-0.05
281	Motor vehicle & part mfg	2.17	2.14	-0.03	9.62	9.61	-0.01	3.25	3.22	-0.03
282	Other transport equipment mfg	0.69	0.68	-0.01	1.64	1.63	-0.01	0.83	0.82	-0.01
283	Photographic & scientific equipment mfg	0.24	0.24	0.00	3.85	3.73	-0.12	0.77	0.75	-0.02
284	Electronic equipment mfg	0.79	0.79	0.00	4.72	4.58	-0.14	1.36	1.34	-0.02
285	Electrical equipment & household appliance mfg	2.15	2.13	-0.02	6.90	6.83	-0.07	2.84	2.81	-0.03
286	Industrial machinery & equipment mfg	1.51	1.52	0.01	10.84	10.79	-0.05	2.87	2.87	0.00
29	Other mfg	2.32	2.27	-0.05	0.34	0.33	-0.01
36-37	Electricity, gas & water supply	4.98	5.04	0.06	4.25	4.31	0.06
571	Accommodation	0.59	0.60	0.01	0.50	0.51	0.01
611	Road freight transport	7.44	7.45	0.01	6.35	6.37	0.02
620	Rail transport	0.66	0.66	0.00	0.56	0.56	0.00
630	Water transport	0.64	0.63	-0.01	0.54	0.54	0.00
640	Air & space transport	1.55	1.55	0.00	1.33	1.32	-0.01
650	Other transport	0.25	0.26	0.01	0.22	0.22	0.00
66	Services to transport	1.87	1.81	-0.06	1.59	1.54	-0.05
670	Storage	1.11	1.12	0.01	0.95	0.95	0.00
771	Property operators & developers	11.83	12.07	0.24	10.11	10.31	0.20
772	Real estate agents	1.70	1.74	0.04	1.45	1.48	0.03
774	Machinery & equipment hiring & leasing	1.52	1.57	0.05	1.30	1.34	0.04
782	Technical services	2.46	2.52	0.06	2.10	2.16	0.06
783	Computer services	3.85	3.84	-0.01	3.29	3.28	-0.01
784	Legal & accounting services	6.25	6.28	0.03	5.34	5.36	0.02
785	Marketing & business management services	6.42	6.52	0.10	5.48	5.57	0.09
786	Other business services	7.61	7.73	0.12	6.50	6.61	0.11
Total		133.2	134.1	0.9	113.7	111.6	-2.1	130.3	130.7	0.4

.. not applicable

(a) Reference base of each index: 1998-99 = 100.0.

STAGE OF PRODUCTION(a): Preliminary commodities index points change

ANZSIC		DOMESTIC			IMPORTS			TOTAL		
		Dec Qtr	Mar Qtr	Change	Dec Qtr	Mar Qtr	Change	Dec Qtr	Mar Qtr	Change
		2006	2007		2006	2007		2006	2007	
012-013	Grain, sheep, beef & dairy cattle farming	5.33	5.57	0.24	4.59	4.80	0.21
011,014-016	Other agriculture	2.34	2.47	0.13	2.01	2.13	0.12
02	Services to agriculture; hunting & trapping	0.29	0.28	-0.01	0.25	0.24	-0.01
030	Forestry & logging	0.37	0.37	0.00	0.32	0.32	0.00
110	Coal mining	2.37	2.36	-0.01	2.04	2.03	-0.01
120	Oil & gas extraction	4.54	4.49	-0.05	34.05	31.71	-2.34	8.61	8.24	-0.37
131	Metal ore mining	3.05	2.91	-0.14	1.31	1.36	0.05	2.81	2.69	-0.12
14	Other mining	1.63	1.63	0.00	0.46	0.39	-0.07	1.47	1.46	-0.01
211	Meat & meat product mfg	0.76	0.75	-0.01	0.65	0.64	-0.01
212	Dairy product mfg	0.40	0.40	0.00	0.35	0.33	-0.02	0.39	0.39	0.00
213-214	Fruit & vegetable processing; oil & fat mfg	0.10	0.10	0.00	0.43	0.38	-0.05	0.14	0.14	0.00
215	Flour mill & cereal food mfg	0.44	0.47	0.03	0.38	0.40	0.02
216	Bakery product mfg	0.07	0.07	0.00	0.06	0.06	0.00
217	Other food mfg	1.12	1.16	0.04	0.49	0.49	0.00	1.03	1.06	0.03
218	Beverage & malt mfg	0.43	0.44	0.01	0.38	0.38	0.00	0.43	0.43	0.00
22	Textile, clothing, footwear & leather mfg	0.89	0.88	-0.01	4.86	4.77	-0.09	1.43	1.41	-0.02
231	Log sawmilling & timber dressing	0.98	0.98	0.00	1.52	1.53	0.01	1.05	1.06	0.01
232	Other wood product mfg	0.85	0.86	0.01	0.25	0.24	-0.01	0.77	0.78	0.01
233	Paper & paper product mfg	1.89	1.94	0.05	7.42	7.45	0.03	2.65	2.70	0.05
241	Printing & services to printing	1.90	1.92	0.02	1.64	1.66	0.02
242	Publishing	2.60	2.61	0.01	2.24	2.25	0.01
251	Petroleum refining	4.39	4.40	0.01	6.20	6.01	-0.19	4.63	4.62	-0.01
253	Basic chemical mfg	3.08	3.03	-0.05	17.14	17.28	0.14	5.02	4.99	-0.03
254	Other chemical product mfg	2.23	2.22	-0.01	5.05	5.04	-0.01	2.62	2.61	-0.01
255	Rubber product mfg	0.45	0.45	0.00	2.43	2.43	0.00	0.72	0.72	0.00
256	Plastic product mfg	1.90	1.93	0.03	3.16	3.03	-0.13	2.07	2.08	0.01
26	Non-metallic mineral product mfg	2.05	2.05	0.00	1.77	1.77	0.00
271	Iron & steel mfg	5.65	5.63	-0.02	7.70	8.19	0.49	5.93	5.98	0.05
272	Basic non-ferrous metal mfg	4.15	3.87	-0.28	1.60	1.46	-0.14	3.79	3.53	-0.26
273	Non-ferrous basic metal product mfg	0.52	0.53	0.01	2.33	2.13	-0.20	0.77	0.75	-0.02
274	Structural metal product mfg	2.13	2.14	0.01	1.83	1.84	0.01
275	Sheet metal product mfg	0.66	0.66	0.00	0.08	0.08	0.00	0.58	0.58	0.00
276	Fabricated metal product mfg	1.02	1.00	-0.02	3.42	3.27	-0.15	1.35	1.31	-0.04
281	Motor vehicle & part mfg	1.49	1.47	-0.02	6.51	6.51	0.00	2.18	2.16	-0.02
282	Other transport equipment mfg	0.65	0.65	0.00	1.62	1.61	-0.01	0.78	0.78	0.00
283	Photographic & scientific equipment mfg	0.10	0.10	0.00	2.20	2.12	-0.08	0.39	0.38	-0.01
284	Electronic equipment mfg	0.63	0.63	0.00	4.06	3.93	-0.13	1.10	1.09	-0.01
285	Electrical equipment & household appliance mfg	1.33	1.31	-0.02	4.87	4.82	-0.05	1.81	1.79	-0.02
286	Industrial machinery & equipment mfg	1.32	1.33	0.01	10.60	10.55	-0.05	2.60	2.60	0.00
36-37	Electricity, gas & water supply	6.17	6.24	0.07	5.31	5.37	0.06
571	Accommodation	0.69	0.70	0.01	0.59	0.61	0.02
611	Road freight transport	9.09	9.11	0.02	7.83	7.84	0.01
620	Rail transport	0.90	0.90	0.00	0.78	0.78	0.00
630	Water transport	0.71	0.70	-0.01	0.61	0.61	0.00
640	Air & space transport	1.72	1.72	0.00	1.49	1.48	-0.01
650	Other transport	0.34	0.35	0.01	0.29	0.30	0.01
66	Services to transport	2.22	2.15	-0.07	1.91	1.85	-0.06
670	Storage	1.35	1.36	0.01	1.16	1.17	0.01
771	Property operators & developers	16.56	16.89	0.33	14.26	14.54	0.28
772	Real estate agents	2.38	2.43	0.05	2.05	2.09	0.04
774	Machinery & equipment hiring & leasing	2.13	2.20	0.07	1.84	1.89	0.05
782	Technical services	2.62	2.69	0.07	2.25	2.31	0.06
783	Computer services	4.10	4.09	-0.01	3.53	3.52	-0.01
784	Legal & accounting services	5.79	5.81	0.02	4.98	5.01	0.03
785	Marketing & business management services	5.98	6.08	0.10	5.15	5.23	0.08
786	Other business services	7.33	7.45	0.12	6.31	6.41	0.10
Total		136.2	136.9	0.7	130.5	127.5	-3.0	135.3	135.5	0.2

.. not applicable

(a) Reference base of each index: 1998-99 = 100.0.

ARTICLES PRODUCED BY MANUFACTURING INDUSTRIES (a): Division Index

<i>Period</i>	<i>Index numbers</i>	<i>% change from previous quarter</i>	<i>% change from corresponding quarter of previous year</i>
.....			
2002-03	130.3	1.2	. .
2003-04	130.4	0.1	. .
2004-05	139.3	6.8	. .
2005-06	149.4	7.3	. .
2002			
June	129.3	0.8	-1.1
September	129.0	-0.2	-0.2
December	130.5	1.2	1.6
2003			
March	132.1	1.2	3.0
June	129.5	-2.0	0.2
September	128.9	-0.5	-0.1
December	129.1	0.2	-1.1
2004			
March	130.6	1.2	-1.1
June	133.1	1.9	2.8
September	136.8	2.8	6.1
December	139.7	2.1	8.2
2005			
March	138.4	-0.9	6.0
June	142.3	2.8	6.9
September	145.3	2.1	6.2
December	146.4	0.8	4.8
2006			
March	149.3	2.0	7.9
June	156.4	4.8	9.9
September	156.8	0.3	7.9
December	155.3	-1.0	6.1
2007			
March	154.9	-0.3	3.8

.....

. . not applicable

(a) Reference base of each index: 1989-90 = 100.0.

ARTICLES PRODUCED BY MANUFACTURING INDUSTRIES (a): Subdivision & group

<i>Period</i>	<i>Food, beverages and tobacco (21)</i>	<i>Textiles and textile products (221-222)</i>	<i>Knitting mills, clothing, footwear and leather (223-226)</i>	<i>Log sawmilling and other wood products (231-232)</i>	<i>Paper and paper products (233)</i>	<i>Printing, publishing and recorded media (24)</i>	<i>Petroleum and coal products (251-252)</i>	<i>Chemicals (253-254)</i>	<i>Rubber and plastics (255-256)</i>
2002-03	139.9	120.3	124.8	135.1	117.9	155.2	172.6	115.1	124.5
2003-04	139.9	116.7	124.2	139.1	117.8	155.7	173.3	114.5	124.7
2004-05	146.2	116.3	123.9	140.5	117.4	157.3	226.8	120.8	130.8
2005-06	150.3	116.2	124.9	143.8	118.5	159.1	297.4	123.4	136.4
2002									
June	139.4	114.9	122.8	133.4	117.0	155.7	163.5	113.3	124.3
September	138.2	115.0	124.2	133.9	117.6	156.1	161.9	114.7	125.3
December	139.5	123.4	124.8	134.0	119.5	154.6	173.2	115.1	125.4
2003									
March	141.3	124.1	124.5	134.9	117.0	155.7	189.4	115.0	122.7
June	140.6	118.5	125.5	137.4	117.6	154.2	165.8	115.7	124.7
September	138.8	117.7	124.8	138.2	118.1	156.1	163.7	114.3	124.8
December	140.1	117.0	124.7	138.7	118.0	155.9	164.5	114.0	124.3
2004									
March	140.5	116.7	123.4	140.3	117.6	156.0	173.5	114.1	124.6
June	140.2	115.4	123.8	139.3	117.5	154.6	191.3	115.7	125.0
September	145.4	115.6	123.6	139.2	117.0	157.4	209.6	117.5	125.9
December	146.4	116.0	124.0	140.5	116.9	157.6	234.1	121.6	130.5
2005									
March	146.3	116.9	124.1	140.0	117.8	157.6	211.3	121.6	133.0
June	146.8	116.5	123.8	142.4	117.7	156.6	252.2	122.3	133.9
September	148.0	115.5	125.1	142.3	118.2	158.6	282.1	122.1	134.2
December	149.4	116.1	124.9	144.9	118.2	158.7	279.4	123.5	136.1
2006									
March	150.9	116.4	125.1	143.6	118.6	159.2	290.3	123.3	137.6
June	153.0	116.8	124.5	144.3	119.1	159.7	337.8	124.6	137.8
September	153.2	117.3	125.4	144.8	119.0	160.6	326.4	127.4	137.5
December	156.2	118.4	125.2	146.1	118.4	160.6	283.0	128.0	140.0
2007									
March	157.6	120.4	125.9	148.4	121.5	162.3	273.1	127.2	141.9

(a) Reference base of each index: 1989-90 = 100.0.

<i>Period</i>	<i>Non-metallic mineral products (26)</i>	<i>Basic metal products (271-273)</i>	<i>Fabricated metal products (274-276)</i>	<i>Transport equipment and parts (281-282)</i>	<i>Electronic equipment and other machinery (283-286)</i>	<i>Other manufacturing (29)</i>
2002-03	125.8	104.8	122.2	129.4	113.8	127.9
2003-04	129.2	106.7	125.3	127.0	113.1	127.8
2004-05	131.2	129.4	133.6	126.1	115.9	131.6
2005-06	134.1	152.9	140.6	126.3	118.6	138.5
2002						
June	121.6	105.7	119.7	128.9	113.9	132.3
September	123.1	106.3	120.5	129.0	114.0	128.6
December	125.6	106.1	121.8	130.0	114.0	127.9
2003						
March	126.7	105.4	122.6	129.9	113.9	128.2
June	127.8	101.3	123.9	128.7	113.3	126.9
September	128.5	101.2	124.4	128.5	112.8	126.4
December	128.9	101.8	124.6	126.9	112.2	127.4
2004						
March	129.2	106.9	124.9	126.4	113.2	128.7
June	130.3	116.8	127.4	126.3	114.0	128.5
September	129.7	126.0	130.9	125.7	115.1	129.7
December	131.3	126.7	132.5	126.6	115.6	131.6
2005						
March	130.5	129.5	134.3	126.4	116.0	132.2
June	133.2	135.3	136.8	125.5	117.0	132.9
September	133.3	137.0	139.2	126.0	117.7	135.1
December	133.8	141.1	141.1	125.9	117.9	136.3
2006						
March	134.5	155.5	140.4	125.7	119.1	139.4
June	134.6	178.0	141.6	127.6	119.7	143.1
September	135.2	186.5	143.0	129.6	121.6	140.9
December	136.4	190.8	145.4	130.9	123.0	142.6
2007						
March	136.4	185.2	145.5	128.6	122.4	146.0

(a) Reference base of each index: 1989-90 = 100.0.

MATERIALS USED IN MANUFACTURING INDUSTRIES(a): Division index

<i>Period</i>	<i>Manufacturing division</i>	<i>Imported materials</i>	<i>Domestic materials</i>
.....			
2002-03	131.9	125.4	136.7
2003-04	125.9	115.2	134.1
2004-05	137.1	120.8	149.7
2005-06	154.5	127.2	172.3
2002			
June	132.6	127.5	136.1
September	130.6	127.1	133.0
December	131.3	126.6	134.5
2003			
March	135.8	125.8	144.7
June	129.9	122.0	134.7
September	126.7	118.3	132.8
December	126.4	116.2	135.0
2004			
March	123.6	111.6	133.6
June	126.9	114.7	135.1
September	136.9	120.7	150.4
December	138.6	120.1	153.3
2005			
March	134.4	119.9	144.5
June	138.5	122.3	150.5
September	149.7	123.7	167.0
December	150.4	126.0	165.4
2006			
March	154.5	128.0	170.3
June	163.5	131.2	186.5
September	164.8	132.5	185.8
December	159.8	131.8	177.2
2007			
March	160.0	131.5	181.5

(a) Reference base of each index: 1989-90 = 100.0.

MATERIALS USED IN MANUFACTURING INDUSTRIES: Division percentage changes

Period Manufacturing division Imported materials Domestic materials

PERCENTAGE CHANGE FROM PREVIOUS YEAR

2002-03	-0.4	-3.8	1.9
2003-04	-4.5	-8.1	-1.9
2004-05	8.9	4.9	11.6
2005-06	12.7	5.3	15.1

PERCENTAGE CHANGE FROM PREVIOUS QUARTER

2002			
June	1.5	-1.0	3.0
September	-1.5	-0.3	-2.3
December	0.5	-0.4	1.1
2003			
March	3.4	-0.6	7.6
June	-4.3	-3.0	-6.9
September	-2.5	-3.0	-1.4
December	-0.2	-1.8	1.7
2004			
March	-2.2	-4.0	-1.0
June	2.7	2.8	1.1
September	7.9	5.2	11.3
December	1.2	-0.5	1.9
2005			
March	-3.0	-0.2	-5.7
June	3.1	2.0	4.2
September	8.1	1.1	11.0
December	0.5	1.9	-1.0
2006			
March	2.7	1.6	3.0
June	5.8	2.5	9.5
September	0.8	1.0	-0.4
December	-3.0	-0.5	-4.6
2007			
March	0.1	-0.2	2.4

PERCENTAGE CHANGE FROM CORRESPONDING QUARTER OF PREVIOUS YEAR

2002			
June	-3.7	-8.9	-0.5
September	-2.9	-3.7	-2.5
December	-0.5	-4.8	2.0
2003			
March	4.0	-2.3	9.5
June	-2.0	-4.3	-1.0
September	-3.0	-6.9	-0.2
December	-3.7	-8.2	0.4
2004			
March	-9.0	-11.3	-7.7
June	-2.3	-6.0	0.3
September	8.1	2.0	13.3
December	9.7	3.4	13.6
2005			
March	8.7	7.4	8.2
June	9.1	6.6	11.4
September	9.3	2.5	11.0
December	8.5	4.9	7.9
2006			
March	15.0	6.8	17.9
June	18.1	7.3	23.9
September	10.1	7.1	11.3
December	6.3	4.6	7.1
2007			
March	3.6	2.7	6.6

MATERIALS USED IN MANUFACTURING INDUSTRIES(a): Subdivision & group

<i>Period</i>	<i>Food, beverages and tobacco (21)</i>	<i>Textiles and textile products (221-222)</i>	<i>Knitting mills and clothing (223-224)</i>	<i>Footwear (225)</i>	<i>Leather and leather products (226)</i>	<i>Log sawmilling and other wood products (231-232)</i>	<i>Paper and paper products (233)</i>	<i>Printing, publishing and recorded media (24)</i>	<i>Petroleum and coal products (251-252)</i>
2002-03	136.0	110.3	107.6	130.6	100.3	130.0	104.8	116.9	188.3
2003-04	136.5	100.5	103.2	124.1	86.0	125.2	103.1	110.3	164.0
2004-05	141.8	101.0	104.4	122.2	87.6	126.6	103.1	108.0	216.9
2005-06	143.8	100.1	104.3	121.4	86.2	133.5	105.8	108.6	296.1
2002									
June	136.7	109.3	107.6	131.9	103.0	135.2	107.8	119.8	180.4
September	128.6	109.1	108.2	130.3	99.7	131.5	106.4	118.8	189.0
December	135.8	112.1	108.3	130.1	103.9	130.1	104.5	116.9	184.5
2003									
March	140.2	111.8	107.7	130.8	99.2	129.9	102.9	116.9	207.9
June	139.5	108.2	106.2	131.1	98.2	128.3	105.5	115.1	171.9
September	137.0	105.4	105.6	125.4	88.4	127.2	105.5	111.6	160.2
December	137.6	100.8	103.2	124.4	89.9	125.5	103.5	111.9	163.6
2004									
March	135.9	97.4	101.6	122.9	82.4	123.8	101.1	109.2	156.8
June	135.5	98.5	102.5	123.7	83.1	124.4	102.4	108.4	175.4
September	141.8	101.1	104.5	122.6	87.4	124.0	104.9	107.9	208.8
December	143.7	100.2	104.9	121.6	89.8	125.9	101.3	107.8	229.1
2005									
March	141.2	101.7	104.9	122.2	87.0	127.2	102.4	107.8	202.4
June	140.4	101.1	103.2	122.2	86.1	129.2	103.9	108.4	227.2
September	145.1	98.4	103.6	121.8	85.0	130.1	104.2	108.9	288.3
December	142.0	99.2	102.8	120.6	84.8	132.6	104.7	108.6	279.9
2006									
March	142.0	100.5	105.2	121.8	87.1	135.7	106.5	107.7	291.4
June	145.9	102.1	105.4	121.4	87.7	135.7	107.6	109.3	324.8
September	145.2	103.2	106.6	123.8	91.9	133.5	111.4	109.6	328.6
December	148.5	103.7	107.6	124.0	92.1	134.3	111.2	109.7	278.4
2007									
March	152.1	104.4	109.0	125.0	92.7	134.2	110.4	109.8	274.9

(a) Reference base of each index: 1989-90 = 100.0.

<i>Period</i>	<i>Chemicals (253-254)</i>	<i>Rubber and plastics (255-256)</i>	<i>Non-metallic mineral products (26)</i>	<i>Basic metal products (271-273)</i>	<i>Fabricated metal products (274-276)</i>	<i>Transport equipment and parts (281-282)</i>	<i>Electronic equipment and other machinery (283-286)</i>	<i>Other manufacturing (29)</i>
2002-03	118.3	123.5	123.1	104.6	111.0	124.8	107.5	124.0
2003-04	116.9	117.5	128.8	102.0	114.0	120.4	107.1	120.9
2004-05	121.3	134.4	135.9	116.0	127.4	126.2	117.1	132.5
2005-06	124.7	135.9	139.1	147.0	140.1	132.6	125.1	141.2
2002								
June	118.4	118.3	119.4	106.4	109.9	124.2	106.9	123.3
September	119.3	122.3	119.8	105.8	110.4	124.9	107.5	124.3
December	118.6	123.4	122.7	104.8	110.5	125.4	107.4	124.2
2003								
March	117.9	122.8	123.2	106.0	112.0	125.3	107.9	124.3
June	117.3	125.6	126.7	101.8	111.1	123.5	107.1	123.1
September	116.8	118.7	127.6	101.3	111.9	121.6	106.5	121.2
December	116.4	116.6	127.3	101.3	111.7	120.8	106.5	120.2
2004								
March	116.4	114.5	127.8	101.3	112.5	118.3	105.6	119.6
June	118.1	120.1	132.3	104.1	119.8	120.8	109.7	122.5
September	121.3	126.7	135.0	115.2	125.3	124.3	114.0	127.4
December	121.5	140.0	135.9	114.5	125.8	125.7	116.6	131.6
2005								
March	121.3	135.0	135.3	115.7	127.5	126.4	116.1	133.7
June	120.9	135.9	137.3	118.5	130.9	128.2	121.7	137.3
September	120.5	129.0	137.8	132.4	136.0	130.2	121.0	137.8
December	122.4	135.7	137.7	139.1	136.9	131.0	122.5	138.7
2006								
March	126.3	137.1	138.6	150.6	139.6	133.1	125.7	141.9
June	129.6	141.7	142.2	165.7	147.9	136.1	131.2	146.4
September	132.1	146.2	142.2	170.8	149.0	137.6	135.4	148.6
December	135.0	152.0	142.4	177.9	157.5	138.5	137.6	149.5
2007								
March	135.6	146.2	142.5	173.8	158.7	138.3	137.6	148.5

(a) Reference base of each index: 1989-90 = 100.0.

OUTPUT OF GENERAL CONSTRUCTION INDUSTRY(a): Subdivision index

<i>Period</i>	<i>Index number</i>	<i>% change from previous period</i>	<i>% change from corresponding quarter of previous year</i>
.....			
2002-03	112.7	4.4	..
2003-04	121.1	7.5	..
2004-05	130.2	7.5	..
2005-06	136.5	4.9	..
2002			
June	109.5	1.2	3.5
September	110.5	0.9	3.6
December	111.4	0.8	3.8
2003			
March	113.0	1.4	4.4
June	115.8	2.5	5.8
September	117.9	1.8	6.7
December	119.4	1.3	7.2
2004			
March	122.3	2.4	8.2
June	124.9	2.1	7.9
September	126.7	1.4	7.5
December	129.3	2.1	8.3
2005			
March	131.6	1.8	7.6
June	133.0	1.1	6.5
September	134.5	1.1	6.2
December	135.8	1.0	5.0
2006			
March	136.9	0.8	4.0
June	138.8	1.4	4.4
September	140.3	1.1	4.3
December	141.4	0.8	4.1
2007			
March	142.7	0.9	4.2

.....

.. not applicable

(a) Reference base of each index: 1998-99 = 100.0.

OUTPUT OF THE GENERAL CONSTRUCTION INDUSTRY(a): Group and class indexes

<i>Period</i>	<i>Building construction (411)</i>	<i>House construction (4111)</i>	<i>Residential building construction n.e.c. (4112)</i>	<i>Non-residential building construction (4113)</i>	<i>Non-building construction (412)</i>	<i>Road and bridge construction (4121)</i>
2002-03	112.4	116.5	110.4	109.6	116.0	116.0
2003-04	121.2	123.7	121.0	119.5	120.8	120.8
2004-05	130.6	130.6	132.1	131.3	125.8	125.8
2005-06	136.8	136.1	138.7	138.2	133.2	133.2
2002						
June	109.2	113.4	106.8	106.5	112.1	112.1
September	110.2	114.3	108.2	107.6	113.6	113.6
December	111.0	115.2	108.8	108.1	115.3	115.3
2003						
March	112.7	117.0	110.4	109.8	116.8	116.8
June	115.5	119.3	114.1	112.8	118.4	118.4
September	117.8	121.4	116.5	115.2	119.3	119.3
December	119.3	122.9	118.4	116.7	120.3	120.3
2004						
March	122.4	124.3	123.0	121.2	121.1	121.1
June	125.1	126.2	126.0	124.7	122.3	122.3
September	127.0	127.8	127.6	127.1	123.7	123.7
December	129.7	129.8	131.3	130.3	125.2	125.2
2005						
March	132.1	131.7	134.0	133.1	126.4	126.4
June	133.5	132.9	135.3	134.8	127.8	127.8
September	134.9	134.5	136.5	135.9	130.2	130.2
December	136.1	135.7	137.9	137.1	132.3	132.3
2006						
March	137.2	136.2	139.2	138.8	133.9	133.9
June	139.1	137.8	141.0	141.0	136.5	136.5
September	140.4	138.0	143.3	143.4	138.6	138.6
December	141.6	138.8	144.0	145.2	139.5	139.5
2007						
March	142.9	140.2	144.9	146.7	140.2	140.2

(a) Reference base of each index: 1998-99 = 100.0.

MATERIALS USED IN HOUSE BUILDING(a): Index numbers

<i>Period</i>	<i>Weighted average of six State capital cities</i>	<i>Sydney</i>	<i>Melbourne</i>	<i>Brisbane</i>	<i>Adelaide</i>	<i>Perth</i>	<i>Hobart</i>
2002-03	130.5	137.2	128.4	127.6	135.7	123.0	133.7
2003-04	134.3	142.3	131.1	132.1	138.4	125.8	139.4
2004-05	138.8	146.6	134.6	137.3	143.4	131.1	148.0
2005-06	142.0	149.5	137.0	140.8	145.8	136.0	151.0
2002							
June	127.8	134.0	126.4	124.3	133.1	120.9	129.9
September	128.8	134.7	127.0	126.1	134.5	121.8	131.6
December	130.1	136.7	128.1	127.2	135.2	122.8	132.6
2003							
March	130.9	138.0	128.7	127.5	136.2	123.4	134.6
June	132.1	139.5	129.6	129.6	136.8	123.9	135.8
September	132.9	140.7	130.1	130.6	137.4	124.6	136.8
December	133.6	141.9	130.5	131.1	137.3	125.2	137.7
2004							
March	134.4	142.6	131.2	132.2	138.3	126.1	140.4
June	136.1	144.1	132.5	134.6	140.6	127.4	142.5
September	137.2	144.8	133.5	135.9	142.0	128.7	145.5
December	138.3	145.9	134.2	137.1	142.9	130.1	147.4
2005							
March	139.3	147.1	135.2	137.4	143.9	131.7	148.6
June	140.5	148.5	135.6	138.9	144.7	134.0	150.4
September	141.0	148.8	136.1	139.4	145.2	134.7	151.9
December	141.5	148.8	136.7	140.3	145.4	135.0	150.0
2006							
March	142.1	149.1	137.3	141.2	145.7	136.1	150.4
June	143.5	151.4	138.0	142.4	146.8	138.0	151.5
September	145.7	152.9	140.9	142.9	148.7	141.2	154.3
December	146.7	152.4	141.4	145.4	150.3	143.7	154.7
2007							
March	147.4	153.3	141.8	145.8	150.0	145.3	156.5

(a) Reference base of each index: 1989-90 = 100.0.

MATERIALS USED IN HOUSE BUILDING: **Percentage change**

<i>Period</i>	<i>Weighted average of six State capital cities</i>	<i>Sydney</i>	<i>Melbourne</i>	<i>Brisbane</i>	<i>Adelaide</i>	<i>Perth</i>	<i>Hobart</i>
PERCENTAGE CHANGE FROM PREVIOUS YEAR							
2002-03	3.6	3.9	2.7	4.6	3.9	3.0	4.1
2003-04	2.9	3.7	2.1	3.5	2.0	2.3	4.3
2004-05	3.4	3.0	2.7	3.9	3.6	4.2	6.2
2005-06	2.3	2.0	1.8	2.5	1.7	3.7	2.0
PERCENTAGE CHANGE FROM PREVIOUS QUARTER							
2002							
June	1.3	1.4	1.4	1.1	1.7	1.6	1.0
September	0.8	0.5	0.5	1.4	1.1	0.7	1.3
December	1.0	1.5	0.9	0.9	0.5	0.8	0.8
2003							
March	0.6	1.0	0.5	0.2	0.7	0.5	1.5
June	0.9	1.1	0.7	1.6	0.4	0.4	0.9
September	0.6	0.9	0.4	0.8	0.4	0.6	0.7
December	0.5	0.9	0.3	0.4	-0.1	0.5	0.7
2004							
March	0.6	0.5	0.5	0.8	0.7	0.7	2.0
June	1.3	1.1	1.0	1.8	1.7	1.0	1.5
September	0.8	0.5	0.8	1.0	1.0	1.0	2.1
December	0.8	0.8	0.5	0.9	0.6	1.1	1.3
2005							
March	0.7	0.8	0.7	0.2	0.7	1.2	0.8
June	0.9	1.0	0.3	1.1	0.6	1.7	1.2
September	0.4	0.2	0.4	0.4	0.3	0.5	1.0
December	0.4	—	0.4	0.6	0.1	0.2	-1.3
2006							
March	0.4	0.2	0.4	0.6	0.2	0.8	0.3
June	1.0	1.5	0.5	0.8	0.8	1.4	0.7
September	1.5	1.0	2.1	0.4	1.3	2.3	1.8
December	0.7	-0.3	0.4	1.7	1.1	1.8	0.3
2007							
March	0.5	0.6	0.3	0.3	-0.2	1.1	1.2
PERCENTAGE CHANGE FROM CORRESPONDING QUARTER OF PREVIOUS YEAR							
2002							
June	2.7	2.9	2.7	3.4	2.8	1.5	2.3
September	3.3	3.2	2.2	4.9	4.8	2.4	3.4
December	3.9	4.0	3.0	5.4	3.9	3.3	3.9
2003							
March	3.8	4.4	3.2	3.7	4.0	3.7	4.7
June	3.4	4.1	2.5	4.3	2.8	2.5	4.5
September	3.2	4.5	2.4	3.6	2.2	2.3	4.0
December	2.7	3.8	1.9	3.1	1.6	2.0	3.8
2004							
March	2.7	3.3	1.9	3.7	1.5	2.2	4.3
June	3.0	3.3	2.2	3.9	2.8	2.8	4.9
September	3.2	2.9	2.6	4.1	3.3	3.3	6.4
December	3.5	2.8	2.8	4.6	4.1	3.9	7.0
2005							
March	3.6	3.2	3.0	3.9	4.0	4.4	5.8
June	3.2	3.1	2.3	3.2	2.9	5.2	5.5
September	2.8	2.8	1.9	2.6	2.3	4.7	4.4
December	2.3	2.0	1.9	2.3	1.7	3.8	1.8
2006							
March	2.0	1.4	1.6	2.8	1.3	3.3	1.2
June	2.1	2.0	1.8	2.5	1.5	3.0	0.7
September	3.3	2.8	3.5	2.5	2.4	4.8	1.6
December	3.7	2.4	3.4	3.6	3.4	6.4	3.1
2007							
March	3.7	2.8	3.3	3.3	3.0	6.8	4.1

— nil or rounded to zero (including null cells)

MATERIALS USED IN BUILDING OTHER THAN HOUSE BUILDING (a)(b)

<i>Period</i>	<i>Weighted average of six State capital cities</i>	<i>Sydney</i>	<i>Melbourne</i>	<i>Brisbane</i>	<i>Adelaide</i>	<i>Perth</i>	<i>Hobart</i>
2002-03	123.6	123.0	122.7	126.9	123.5	122.8	124.2
2003-04	127.7	127.1	126.7	131.2	126.8	127.7	127.0
2004-05
2005-06	1.0	1.0	1.0	1.0	1.0	1.0	1.0
2002							
June	120.3	120.0	119.3	122.5	120.7	119.7	122.8
September	121.6	121.0	120.8	125.1	121.8	120.3	123.5
December	122.8	122.1	121.8	126.1	123.3	122.4	123.7
2003							
March	124.1	123.5	123.4	127.4	123.8	123.6	124.2
June	125.7	125.3	124.8	128.8	125.1	125.0	125.4
September	126.3	126.0	125.2	129.3	125.6	125.6	126.0
December	126.7	126.4	125.4	130.2	125.7	126.9	126.1
2004							
March	126.9	126.3	126.1	130.4	126.1	126.9	126.5
June	130.7	129.8	129.9	134.8	129.7	131.2	129.5
September
December
2005							
March
June
September
December
2006							
March
June
September
December
2007							
March

.. not applicable

(a) Reference base of each index: 1989-90 = 100.0.

(b) Series discontinued from June quarter 2004.

MATERIALS USED IN BUILDING OTHER THAN HOUSE BUILDING(a)

<i>Period</i>	<i>Weighted average of six State capital cities</i>	<i>Sydney</i>	<i>Melbourne</i>	<i>Brisbane</i>	<i>Adelaide</i>	<i>Perth</i>	<i>Hobart</i>
PERCENTAGE CHANGE FROM PREVIOUS YEAR							
2002-03	4.2	4.1	4.2	5.0	4.0	4.3	2.4
2003-04	3.3	3.3	3.3	3.4	2.7	4.0	2.3
2004-05	..	na	na
2005-06
PERCENTAGE CHANGE FROM PREVIOUS QUARTER							
2002							
June	1.6	1.8	1.4	1.5	1.4	2.0	1.0
September	1.1	0.8	1.3	2.1	0.9	0.5	0.6
December	1.0	0.9	0.8	0.8	1.2	1.7	0.2
2003							
March	1.1	1.1	1.3	1.0	0.4	1.0	0.4
June	1.3	1.5	1.1	1.1	1.1	1.1	1.0
September	0.5	0.6	0.3	0.4	0.4	0.5	0.5
December	0.3	0.3	0.2	0.7	0.1	1.0	0.1
2004							
March	0.2	-0.1	0.6	0.2	0.3	0.0	0.3
June	3.0	2.8	3.0	3.4	2.9	3.4	2.4
September
December
2005							
March
June
September
December
2006							
March
June
September
December
2007							
March
PERCENTAGE CHANGE FROM CORRESPONDING QUARTER OF PREVIOUS YEAR							
2002							
June	2.6	2.8	2.5	2.7	2.8	2.5	2.2
September	3.5	3.3	3.4	4.3	3.9	3.2	2.7
December	4.0	3.7	3.8	5.0	4.2	4.3	2.7
2003							
March	4.8	4.7	4.9	5.6	4.0	5.4	2.1
June	4.5	4.4	4.6	5.1	3.6	4.4	2.1
September	3.9	4.1	3.6	3.4	3.1	4.4	2.0
December	3.2	3.5	3.0	3.3	1.9	3.7	1.9
2004							
March	2.3	2.3	2.2	2.4	1.9	2.7	1.9
June	4.0	3.6	4.1	4.7	3.7	5.0	3.3
September
December
2005							
March
June
September
December
2006							
March
June
September
December
2007							
March

.. not applicable

na not available

(a) Series discontinued from June quarter 2004.

MATERIALS USED IN COAL MINING(a)

Period	OPEN CUT MINING			UNDERGROUND MINING		
	Index numbers	% change from previous period	% change from corresponding quarter of previous year	Index numbers	% change from previous period	% change from corresponding quarter of previous year
2002-03	134.3	3.6	. .	129.9	1.9	. .
2003-04	132.6	-1.3	. .	129.9	0.0	. .
2004-05	144.8	9.2	. .	139.1	7.1	. .
2005-06	161.2	11.3	. .	150.1	7.9	. .
2002						
June	129.1	1.3	-1.0	126.3	-1.2	-0.7
September	133.4	3.3	1.5	130.4	3.2	2.4
December	134.9	1.1	3.5	129.6	-0.6	0.9
2003						
March	134.4	-0.4	5.5	129.3	-0.2	1.2
June	134.3	-0.1	4.0	130.1	0.6	3.0
September	129.5	-3.6	-2.9	130.3	0.2	-0.1
December	131.5	1.5	-2.5	129.7	-0.5	0.1
2004						
March	132.1	0.5	-1.7	129.5	-0.2	0.2
June	137.3	3.9	2.2	130.1	0.5	0.0
September	140.9	2.6	8.8	132.4	1.8	1.6
December	144.8	2.8	10.1	136.1	2.8	4.9
2005						
March	143.0	-1.2	8.3	142.6	4.8	10.1
June	150.5	5.2	9.6	145.3	1.9	11.7
September	157.3	4.5	11.6	148.2	2.0	11.9
December	158.3	0.6	9.3	149.2	0.7	9.6
2006						
March	162.3	2.5	13.5	151.0	1.2	5.9
June	167.0	2.9	11.0	152.0	0.7	4.6
September	170.3	2.0	8.3	154.2	1.4	4.0
December	164.2	-3.6	3.7	159.0	3.1	6.6
2007						
March	165.4	0.7	1.9	160.3	0.8	6.2

. . not applicable

(a) Reference base of each index: 1989-90 = 100.0.

<i>Period</i>	<i>Index numbers</i>	<i>% change from previous period</i>	<i>% change from corresponding quarter of previous year</i>
.....			
2002-03	105.2	1.9	. .
2003-04	107.1	1.8	. .
2004-05	111.2	3.8	. .
2005-06	115.9	4.2	. .
2002			
June	103.3	0.3	0.1
September	103.5	0.2	0.3
December	104.9	1.4	1.5
2003			
March	105.9	1.0	2.8
June	106.3	0.4	2.9
September	106.1	-0.2	2.5
December	106.6	0.5	1.6
2004			
March	107.8	1.1	1.8
June	107.8	0.0	1.4
September	109.6	1.7	3.3
December	111.5	1.7	4.6
2005			
March	111.0	-0.4	3.0
June	112.5	1.4	4.4
September	114.0	1.3	4.0
December	115.3	1.1	3.4
2006			
March	116.6	1.1	5.0
June	117.8	1.0	4.7
September	119.1	1.1	4.5
December	118.4	-0.6	2.7
2007			
March	118.2	-0.2	1.4

.....

. . not applicable

(a) Reference base of each index: 1998-99 = 100.0.

OUTPUT OF THE TRANSPORT (FREIGHT) & STORAGE INDUSTRIES(a): Subdivision indexes

<i>Period</i>	<i>Road transport (61)</i>	<i>Rail transport (62)</i>	<i>Water transport (63)</i>	<i>Air and space transport (64)</i>	<i>Other transport (65)</i>	<i>Services to transport (66)</i>	<i>Storage (67)</i>
2002-03	107.3	94.8	106.3	111.4	103.4	100.2	103.3
2003-04	110.2	95.7	105.2	114.4	101.7	101.4	104.9
2004-05	115.8	96.7	114.3	111.1	107.8	104.2	107.6
2005-06	123.0	98.0	111.2	119.5	107.5	106.6	113.6
2002							
June	105.3	94.0	108.6	104.4	103.3	97.3	102.1
September	105.4	94.7	106.7	104.5	101.3	100.2	102.2
December	106.6	93.6	107.2	113.8	101.3	100.6	102.3
2003							
March	108.1	95.6	106.7	113.2	105.2	99.8	104.4
June	109.2	95.4	104.6	114.2	105.9	100.0	104.4
September	109.2	94.8	101.0	114.7	105.9	100.8	104.6
December	109.8	95.0	102.0	114.6	105.8	101.1	104.9
2004							
March	110.7	97.3	108.5	115.2	97.5	101.2	105.2
June	111.0	95.7	109.1	113.1	97.6	102.5	104.8
September	112.7	97.3	114.1	112.8	107.7	103.0	106.2
December	115.6	98.0	116.1	113.0	107.4	104.0	107.1
2005							
March	116.4	95.9	112.0	109.4	108.2	104.0	107.7
June	118.5	95.7	115.0	109.3	107.9	105.6	109.2
September	120.1	97.4	109.8	118.8	108.2	105.9	110.3
December	121.8	98.1	112.5	120.5	108.1	104.1	114.1
2006							
March	124.2	96.9	111.5	120.5	106.7	107.3	114.8
June	125.9	99.6	111.1	118.1	106.8	109.2	115.3
September	127.9	101.7	110.9	119.0	106.8	108.8	117.0
December	126.0	98.8	112.4	116.3	106.9	112.8	118.2
2007							
March	126.3	99.0	111.0	115.9	108.5	110.9	118.7

(a) Reference base of each index: 1998-99 = 100.0.

<i>Period</i>	<i>Index numbers</i>	<i>% change from previous period</i>	<i>% change from corresponding quarter of previous year</i>
2002-03	113.5	2.6	. .
2003-04	117.3	3.3	. .
2004-05	120.3	2.6	. .
2005-06	125.6	4.4	. .
2002			
June	111.4	0.5	2.6
September	112.3	0.8	2.4
December	113.1	0.7	2.5
2003			
March	114.0	0.8	2.8
June	114.5	0.4	2.8
September	115.9	1.2	3.2
December	116.5	0.5	3.0
2004			
March	118.1	1.4	3.6
June	118.5	0.3	3.5
September	119.2	0.6	2.8
December	119.9	0.6	2.9
2005			
March	120.6	0.6	2.1
June	121.5	0.7	2.5
September	123.8	1.9	3.9
December	125.4	1.3	4.6
2006			
March	125.8	0.3	4.3
June	127.5	1.4	4.9
September	130.7	2.5	5.6
December	132.6	1.5	5.7
2007			
March	134.5	1.4	6.9

. . not applicable

(a) Reference base of each index: 1998-99 = 100.0.

<i>Period</i>	<i>Property services (77)</i>	<i>Property operators and developers (771)</i>	<i>Real estate agents (772)</i>	<i>Machinery equipment hiring and leasing (774)</i>	<i>Business services (78)</i>	<i>Scientific research (781)</i>	<i>Technical services (782)</i>	<i>Computer services (783)</i>
2002-03	113.3	111.2	149.7	100.0	113.6	113.5	113.4	114.7
2003-04	116.9	111.6	169.0	104.0	117.5	114.3	119.7	115.4
2004-05	121.0	115.6	175.7	106.9	119.9	117.4	124.2	115.1
2005-06	127.6	122.3	186.8	109.2	124.4	124.1	134.0	117.2
2002								
June	112.1	111.8	139.1	98.8	110.9	107.2	107.8	112.6
September	112.3	111.1	143.8	98.7	112.3	112.4	112.1	113.2
December	112.9	111.1	147.4	100.1	113.2	112.8	112.9	115.1
2003								
March	113.9	111.6	151.9	100.3	114.0	113.8	113.5	115.2
June	114.1	111.0	155.5	100.7	114.8	115.0	114.9	115.4
September	115.3	111.2	161.5	102.4	116.3	115.1	118.9	115.4
December	116.1	111.3	165.4	103.6	116.8	114.2	119.3	114.7
2004								
March	117.5	111.7	172.9	104.2	118.4	114.0	119.5	115.7
June	118.6	112.3	176.1	105.6	118.5	113.8	121.1	115.9
September	119.3	113.4	175.8	105.4	119.2	115.1	123.1	114.8
December	120.3	114.9	175.2	105.7	119.7	115.6	124.0	115.5
2005								
March	121.7	116.4	175.4	107.9	120.0	117.2	124.3	114.8
June	122.7	117.5	176.4	108.5	120.8	121.6	125.5	115.1
September	124.6	119.1	181.7	108.9	123.3	123.7	132.4	115.6
December	126.8	121.7	184.0	108.8	124.6	124.0	133.3	117.9
2006								
March	128.1	122.8	187.3	109.4	124.4	124.0	135.0	117.5
June	131.0	125.5	194.0	109.5	125.3	124.5	135.3	117.6
September	134.4	127.8	205.0	110.4	128.4	129.7	141.7	118.8
December	137.4	130.7	211.0	111.5	129.7	129.6	143.0	121.0
2007								
March	140.3	133.3	215.4	114.5	131.0	130.0	146.5	120.6

(a) Reference base of each index: 1998-99 = 100.0.

<i>Period</i>	<i>Legal and accounting services (784)</i>	<i>Marketing and business management services (785)</i>	<i>Other business services (786)</i>
.....			
2002-03	117.7	117.0	108.9
2003-04	124.4	120.1	113.3
2004-05	129.0	120.6	116.8
2005-06	136.9	123.7	119.7
2002			
June	114.9	115.8	106.2
September	116.8	115.2	107.8
December	117.4	116.0	108.4
2003			
March	117.9	117.8	109.3
June	118.5	119.0	110.2
September	121.5	119.3	111.9
December	122.0	120.4	113.0
2004			
March	127.1	121.1	113.8
June	126.9	119.6	114.6
September	128.0	120.8	115.5
December	128.4	120.8	116.1
2005			
March	129.1	120.6	117.2
June	130.6	120.2	118.4
September	135.3	122.2	119.8
December	137.8	122.8	119.8
2006			
March	136.7	123.6	119.4
June	137.7	126.2	119.8
September	142.4	128.2	122.6
December	143.1	128.5	124.4
2007			
March	143.7	130.6	126.4

(a) Reference base of each index: 1998-99 = 100.0.

EXPLANATORY NOTES

INTRODUCTION

1 This publication contains a range of producer price indexes. Economy-wide indexes are presented within a stage of production framework, followed by a set of indexes relating to specific industries (selected manufacturing, construction, mining and service industries).

2 Index numbers for the recently established producer price indexes, i.e. stage of production and the service industry and construction industry output indexes, are calculated on the reference base 1998–99=100.0. The index numbers for the other, longer established producer price indexes are calculated on the reference base 1989–90=100.0.

GENERAL

Output and input indexes

3 Producer price indexes can be constructed as either output measures or input measures. Output indexes measure changes in the prices of sales by a defined sector of the economy while input indexes measure changes in the prices of purchases by a particular economic sector.

Valuation basis

4 The valuation basis for the transactions covered by an output index is basic prices, defined as the amount received by the producer exclusive of any taxes on products and transport and trade margins (i.e. the pricing point is ex-factory, ex-farm, ex-service provider, etc.).

5 On the other hand, an input index has a valuation basis of purchasers' prices, defined as the amount paid by the purchaser inclusive of any non-deductible taxes on products and transport and trade margins (i.e. the prices recorded in the index should be those relating to delivered into store, delivered on site, etc.).

6 In reality, industry practice may mean that it is sometimes necessary to diverge from the conceptual ideal in order to obtain actual transaction prices. For example, although the pricing point for the output index Price Indexes of Articles Produced by Manufacturing Industries is ex-factory, in cases where costs such as handling and distribution are built into the manufacturer's selling price, they will be included in the index.

7 Similarly, for input indexes such as the Price Index of Materials Used In House Building, which has a pricing point of delivered on site, it has sometimes been necessary to use the nearest actual transaction price available, e.g. prices of materials supplied and fixed.

8 The GST is excluded from all the prices recorded in the current producer price indexes because, in the main, it is deductible on business-to-business transactions. In the case of future service industry output indexes relating to business-to-household transactions, the GST will also be excluded because the pricing basis will be basic prices (i.e. exclusive of product taxes).

Items and weights

9 The indexes are fixed weighted indexes of the Laspeyres form. The list of items and the weights are updated periodically to ensure they remain representative. New index series compiled using updated weights are linked to the previous series to maintain a continuous series. Broad level weights are derived from an analysis of the latest available input-output tables as well as other ABS and industry sources.

10 Where prices of items are expected to move in a similar way, many of the directly priced items carry not only their own weight but also the weight of similar commodities.

Price measurement

11 The main sources of ongoing price data are samples of businesses. The samples can relate to either buyers or sellers, or a combination of both. The choice is influenced by the pricing point of the index (output or input) and practical considerations such as the relative degree of concentration of buyers, and of sellers, and the implications for sample sizes and costs.

EXPLANATORY NOTES *continued*

Price measurement continued

12 The main pricing methodology used is specification pricing, under which a manageable sample of precisely specified products is selected, in consultation with each reporting business, for repeat pricing. In specifying the products, care is taken to ensure that they are fully defined in terms of all the characteristics which influence their transaction prices. As such, all the relevant technical characteristics need to be described (e.g. make, model, features) along with the unit of sale, type of packaging, conditions of sale (e.g. delivered, payment within 30 days), etc.

13 When the quality or the specifications of an item being priced change over time, adjustments are made to the reported prices so that the index captures only pure price change. That is, any element of price change attributable to a change in quality is removed. If there is an increase (decrease) in the quality of an item, then the price is adjusted downwards (upwards) to reflect the 'worth' of the quality change. This technique is known as pricing to constant quality.

14 Another very important consideration in establishing and maintaining price collections is to ensure that the prices reported are actual market transaction prices. That is, they must reflect the net prices received (or paid) after taking into account all discounts applied to the transactions whether they be volume discounts, settlement discounts or competitive price cutting discounts which are likely to fluctuate with market conditions.

15 Any rebates also need to be considered. The collection of nominal list prices, or book prices, is unlikely to yield reliable price indexes and could result in quite misleading results if fluctuations in transaction prices are not captured. The ABS therefore asks respondent businesses to report details of the discounts they offer so that actual transaction prices can be calculated. In addition, as many different types of discounts apply to business-to-business transactions (see paragraph 14), considerable effort is put into monitoring discount practices in order to identify changes to existing discounts and the introduction of new ones.

16 Specification pricing is not feasible in cases where the products are unique and not reproduced over time, e.g. construction industry output and many of the customised business services. As a result alternative pricing techniques need to be used, often involving compromise. Some of the approaches adopted include the use of model pricing, collecting unit values for reasonably homogeneous components of a good or service, input pricing and collecting charge-out rates (e.g. for a legal service).

Classifications

17 As far as possible the industry sector indexes have been constructed in accordance with the *Australian and New Zealand Standard Industrial Classification* (ANZSIC). The Stage of Production 'contribution to change' tables (tables 5–9) are also presented in terms of the ANZSIC.

STAGE OF PRODUCTION (SOP) PRODUCER PRICE INDEXES

Introduction

18 Tables 1–9 present producer price indexes for the supply of commodities to the Australian economy in a stage of production (SOP) framework. As such, the indexes cover both domestically produced and imported commodities, individually and in aggregate. The SOP indexes are compiled from data used in the industry sector indexes, the international trade indexes and some additional data collections. The indexes are calculated on the reference base 1998–99=100.0.

19 These indexes are compiled within the statistical framework outlined in the 1997 *ABS Information Paper: An Analytical Framework for Price Indexes in Australia* (cat. no. 6421.0) and are designed to support the study of inflation.

20 A more detailed explanation of the SOP concept is contained in the *ABS Information Paper: Producer Price Index Developments* (cat. no. 6422.0), released on 25 March 1999. The index numbers in this current publication cannot be directly compared with the experimental index numbers in the information paper because:

EXPLANATORY NOTES *continued*

Introduction continued

- the coverage of the series has been expanded to include selected service and construction industries; and
- the weighting patterns of the indexes have been updated to 1996–97 and the reference base of the indexes has been updated to 1998–99=100.0.

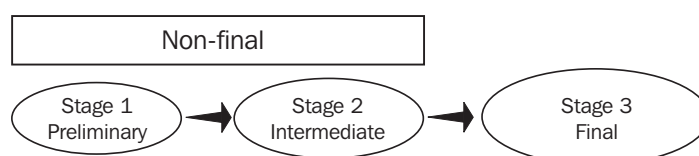
Pricing basis

21 In concept the valuation basis of the SOP indexes is basic prices (see paragraphs 4–8). However, the use of component series from existing ABS price collections in some cases results in the pricing basis diverging from this ideal. For example, imports are priced on a 'free-on-board' (f.o.b) basis, not 'cost, insurance, freight' (c.i.f), which approximates basic prices.

The SOP concept

22 The indexes are compiled using the SOP concept. Under this concept flows of commodities are categorised according to their economic destination on a sequential basis along the production chain. The basis for the categorisation is the Australian input–output tables (1996–97). The primary categorisation is between final commodities (i.e. commodities destined for final consumption, capital formation or export) and non-final commodities (i.e. commodities that flow into intermediate consumption for further processing).

23 This initial breakdown of the commodity flows into final and non-final represents a useful economic dissection of producers' transactions. However, the non-final commodities can flow into the production of both final and other non-final commodities. Therefore, to aid analysis, the non-final commodity flows have been divided on a sequential basis between Stage 1 (or preliminary) commodities and Stage 2 (or intermediate) commodities as illustrated below. This approach results in three separate stages of production.



24 The three stages are not aggregated in order to avoid the potential distorting effects that may result from multiple counting of changes in transaction prices as commodities flow through different production processes.

25 Under this framework, preliminary (Stage 1) commodities are used in the production of intermediate (Stage 2) commodities; in turn intermediate (Stage 2) commodities flow into the production of final (Stage 3) commodities.

26 The framework allows for analyses of price change as commodities flow through production processes. Price changes for earlier stages of production may be indicators of possible future price changes for later stages.

Transaction flow approach

27 The ABS has adopted a transaction flow approach in disaggregating commodity supply into the various production stages. This approach means that the assignment of a commodity to a stage is based on the proximity of its use in final demand.

28 Alternative degree of fabrication or principal destination approaches are employed by statistical agencies in some other countries. These approaches result in the allocation of particular commodities to one, and only one, stage. This would present particular problems for Australia due to the openness of the economy, with exports (and imports) equivalent to about 20% of gross domestic product. Commodities such as wheat, wool, and iron ore are exported in large volumes as well as being further processed locally. The allocation of such commodities to a single stage would be very arbitrary by necessity.

EXPLANATORY NOTES *continued*

Transaction flow approach continued

29 Adopting the transaction flow approach means, for example, that exported wheat and domestically used wheat are treated as different commodities for index construction purposes. Under this approach commodities transactions can be allocated to more than one stage. Exported wheat is treated as a final (Stage 3) commodity while wheat used domestically to make the flour used in bread production is considered to be a preliminary (Stage 1) commodity. Similarly, commodities such as energy and containers appear under all three categories.

Scope and coverage

30 Producer price indexes conventionally relate to the output of domestic industries, at basic prices, either inclusive or exclusive of exports. As the main focus is on domestic inflation, exports are excluded from the headline SOP series 'Final (Stage 3) commodities', as presented in the key figures on the front page and in tables 1–6. Index series for Final (Stage 3) commodities including exports are available in tables 26 & 27 on the ABS web site <www.abs.gov.au>.

31 Imports have also been incorporated within the framework, recognising that they represent an important potential source of inflationary pressure.

32 In concept, the SOP indexes incorporate all flows of goods and services. However, currently there is limited coverage of service industries and the construction industry by the producer price indexes (see sections on construction industry and service industries producer price indexes below).

33 Price indexes for most transport and storage services (division I of ANZSIC) and property and business services (division L of ANZSIC) industries have been included in the SOP framework. However, price series for most Final (Stage 3) consumer services are not currently available on a sufficiently timely basis to allow their inclusion in the indexes. This has the effect of decreasing the relative weight of consumer items versus capital items in the final stage. It is intended to introduce additional services price series as they become available, along with the consequential weight changes.

34 Index coverage for the construction industry (division E of ANZSIC) is currently limited to the output of the following ANZSIC classes:

- 4111 House construction;
- 4112 Residential building construction n.e.c.;
- 4113 Non-residential building construction; and
- 4121 Road and bridge construction.

35 As with services, it is intended to introduce further construction price series as they become available.

Items and weights

36 The items included in the indexes reflect the values of commodity flows, for both domestic supply and imports, allocated to stages based on an analysis of detailed 1996–97 input–output tables. The index structures and weighting patterns for the SOP indexes are shown in the Appendix of the December 2002 issue of *Producer Price Indexes, Australia* (cat. no. 6427.0).

Comparisons with the Consumer Price Index

37 Final (Stage 3) indexes are presented for consumer commodities. It should be noted that this index is not directly comparable with the Consumer Price Index (CPI). The two indexes differ significantly in concept and coverage. The major differences are:

- the pricing basis for the Final (Stage 3) SOP consumer index is basic prices (see paragraph 21). The CPI, however, measures changes in purchasers' prices, i.e. the actual retail prices paid by households for products, inclusive of non-deductible taxes on products, such as the GST, and any transport and trade margins;
- the coverage of the two indexes differs. Currently the Final (Stage 3) SOP consumer index mainly measures changes in the prices of goods, i.e. most household services are currently excluded from the index (see paragraph 33). The CPI covers both goods and services;

EXPLANATORY NOTES *continued*

*Comparisons with the
Consumer Price Index
continued*

- the indexes have different weighting bases. The weighting pattern for the Final (Stage 3) SOP consumer index is based on the 1996–97 input-output tables, while the CPI weighting pattern is based on the 2003–04 Household Expenditure Survey.

MANUFACTURING INDUSTRY PRODUCER PRICE INDEXES

Introduction

38 The manufacturing industry producer price indexes relate to the outputs (i.e. articles produced) and inputs (i.e. materials used) of establishments classified to designated sectors of the Australian manufacturing industry. They are important sources of data for the SOP indexes.

39 Tables 10 and 11 present the Price Indexes of Articles Produced by Manufacturing Industries and tables 12–14 present the Price Indexes of Materials Used in Manufacturing Industries. Basic prices are used for the output index and purchasers' prices for the input index (see paragraphs 4–8). Therefore, as far as possible, ex-factory prices are included in the output index and delivered into factory prices in the input index.

40 Table 47, which is available on the ABS web site, presents Price Indexes of Copper Materials used in the manufacture of electrical equipment.

41 All of the manufacturing indexes are calculated on the reference base 1989–90=100.0.

Scope

42 The manufacturing indexes are constructed on a net sector basis with intra-sector transactions netted out. The scope of the output index is therefore restricted to transactions in articles produced by the defined sector of Australian manufacturing industry that are sold or transferred to domestic establishments outside that sector, or used as capital equipment, or exported. The scope of the input index relates to transactions in materials used in the defined sector of Australian manufacturing industry that are produced by domestic establishments outside that sector or imported.

Classification

43 The manufacturing division output index (table 10) measures changes in prices of articles produced by establishments classified to ANZSIC division C, Manufacturing, that are sold or transferred to domestic establishments outside the manufacturing division for intermediate use, or used as capital equipment, or exported. It excludes intermediate transactions in articles produced by establishments within the manufacturing division and sold or transferred to other establishments within the manufacturing division for further processing.

44 Similarly, the manufacturing division input index (tables 12 and 13) measures changes in prices of materials used by establishments classified to ANZSIC division C, Manufacturing, that have been purchased or transferred in from domestic establishments outside the manufacturing division or imported. It excludes intermediate transactions in materials produced by establishments within the manufacturing division and sold or transferred to other establishments within the manufacturing division for further processing.

45 An advantage of the net sector approach over the alternative gross sector approach (under which the intra-sector transactions would be in-scope) is that it avoids the potential distorting effects that may result from multiple counting of changes in transaction prices as commodities flow through different production processes.

46 On the other hand, although conceptually valid, the exclusion of the internal intermediate transactions from the net sector manufacturing division indexes results in incomplete coverage of the targeted sector of the economy. In order to increase coverage, while still avoiding the multiple counting issue, independent net sector measures have been constructed for ANZSIC manufacturing subdivisions and groups. While having intermediate transactions between different manufacturers within a given subdivision or group netted out, intermediate transactions with manufacturers in other subdivisions/groups are in-scope.

EXPLANATORY NOTES *continued*

Classification continued

47 The output indexes for ANZSIC subdivisions and groups (table 11) measure changes in prices of articles produced by establishments classified to each defined ANZSIC manufacturing sector which are sold or transferred to establishments outside that sector. These exclude intermediate transactions in articles produced by establishments within the specific sector and sold or transferred to other establishments in the same sector for further processing.

48 Similarly, the input indexes for ANZSIC subdivisions and groups (table 14) measure changes in prices of materials used by establishments classified to each defined ANZSIC manufacturing sector which are purchased or transferred in from establishments outside that sector. These exclude intermediate transactions in materials produced by establishments within the specific sector and sold or transferred to other establishments in the same sector for further processing.

49 It is important to note that the manufacturing division output and input indexes, and the corresponding subdivision/group indexes, are independent constructs. As such, a division index cannot be derived by simply weighting together the separate subdivision and group indexes as the latter net sector indexes are not a straightforward decomposition of the broader net sector index.

Items and weights

50 The items included in the manufacturing indexes reflect the values of articles produced and materials used based on an analysis of detailed input-output tables; 1993-94 for the output indexes and 1989-90 for the input indexes.

51 The index structures and weighting patterns are shown in Appendix A of the September quarter 2000 issue of the former publication *Price Indexes of Articles Produced by Manufacturing Industry, Australia* (cat. no. 6412.0), and Appendix A of the July 1996 issue of the former publication *Price Indexes of Materials Used in Manufacturing Industries, Australia* (cat. no. 6411.0).

CONSTRUCTION INDUSTRY PRODUCER PRICE INDEXES *Introduction*

52 The construction industry producer price indexes relate to the outputs (e.g. buildings) and the inputs (i.e. materials used) of establishments classified to designated sectors of the Australian construction industry. They are important sources of data for the SOP index.

53 Table 15 presents the Price Index of the Output of the General Construction Industry, and Table 16 presents price indexes of the outputs of the constituent industries of this ANZSIC subdivision. Tables 17 and 18 present the Price Index of Materials Used in House Building and tables 19 and 20 present the Price Index of Materials Used in Building Other than House Building (discontinued after June quarter 2004). The pricing basis is basic prices for the output indexes and purchasers' prices for the input indexes (see paragraphs 4-8 above). Therefore, as far as possible, builders' selling prices are reflected in the output index and delivered on site prices in the input indexes.

54 The output indexes are calculated on the reference base 1998-99=100.0 and the input indexes on the reference base 1989-90=100.0.

Scope

55 The Price Index of the Output of the General Construction Industry (table 15) measures changes in prices of the output of ANZSIC subdivision 41 - general construction. The price indexes in table 16 measure changes in the price of the output of constituent groups and classes of this subdivision. These groups and classes are: the building construction group (411), which consists of the classes house construction (4111), residential building construction n.e.c. (4112) and non-residential building construction (4113); and the non-building construction group (412), with the class of road and bridge construction (4121). Road and bridge construction is the sole contributor to the index for non-building construction until coverage can be extended to include the class of non-building construction n.e.c. (4122), which consists of railways, telecommunications, electricity infrastructure, etc.

EXPLANATORY NOTES *continued*

Scope continued

56 The first input index measures changes in prices of materials used in house building, where a house is defined as a detached building predominantly used for long-term residential purposes and consisting of only one dwelling unit. ANZSIC class 4111 (house construction) approximates the industry scope of the index.

57 The second input index measures changes in prices of materials used in other forms of building with a scope approximating ANZSIC class 4112 (residential building construction n.e.c.) and class 4113 (non-residential building construction), together.

58 Neither of the input indexes explicitly cover alterations, additions, renovations and repairs. They each relate to the statistical division for each State capital city.

Items and weights

59 The items included in the output indexes are chosen on the basis of work done, categorised by building function or type of construction and State of activity, as recorded in the ABS Construction Activity statistics for the five years ending 1998-99.

60 The items and weights for the price index of materials used in house building were derived from reported quantities of each material used in selected representative houses in the three years ending 2002-03. The weighting pattern for each capital city index will reflect variations in prices for the cities as applied to an Australian average basket of house building materials, with some allowance for city specific building practices e.g. the differential use of steel and timber materials in Perth and Adelaide compared with the other capital cities. The weighting patterns for the price index of material used in house building are set out in Appendix 2 of the September quarter 2005 issue of *Producer Price Indexes, Australia* (cat. no. 6427.0). Note that the weights shown are values based on the quantities of various materials used in house building over the 3 years ended 2002-03, valued at September quarter 2005 prices.

MINING INDUSTRY PRODUCER PRICE INDEXES

61 Table 21 presents Price Indexes of Materials Used in Coal Mining. The pricing basis of the index is purchasers' prices (see paragraphs 4-8) and, as far as possible, the prices included in the index are for items delivered to the mine site or to the primary storage area for a group of mines.

62 The items included in the indexes reflect the value of materials used in the operation of open cut and underground coal mines in Australia during 1999-2000. The index structures and weighting patterns are available on request.

63 The indexes are calculated on the reference base 1989-90=100.0.

SERVICE INDUSTRIES PRODUCER PRICE INDEXES

Introduction

64 Tables 22-25 present producer price indexes for the output of the transport (freight) & storage division, and the property & business services division of the ANZSIC. Included are index numbers for each of the divisions and subdivisions. Transport indexes presented cover freight and services to transport activities only, i.e. passenger transport is excluded. The pricing basis of the indexes is basic prices (see paragraphs 4-8), and so the prices used in the index relate to the amount received by the service provider. The indexes are important sources of data for the SOP indexes. The index numbers are calculated on the reference base 1998-99=100.0.

65 These indexes represent the results to date of a program to progressively extend the scope of the producer price indexes into the service sectors of the economy. First results from the program were published in March 1999, by way of experimental indexes, in the ABS *Information Paper: Producer Price Index Developments* (cat. no. 6422.0).

Scope

66 The transport (freight) & storage division and property & business services division indexes measure changes in prices of services provided by establishments classified respectively to ANZSIC division I, transport (freight) & storage and ANZSIC division L, property & business services. Index numbers for these divisions are provided in tables 22 and 24 respectively.

EXPLANATORY NOTES *continued*

Scope continued

67 Tables 23 and 25 contain index numbers for the subdivisions of ANZSIC division I, transport (freight) & storage, and the subdivisions and groups of ANZSIC division L, property & business services, respectively. Indexes at the ANZSIC group and class level for division I, and the ANZSIC class level for division L, are also available on the ABS web site <<http://www.abs.gov.au>> under catalogue 6427.0, in tables 45 and 46 respectively. Note that some ANZSIC classes within these divisions do not yet have established indexes, and thus are not represented within these tables.

Items and weights

68 ANZSIC class indexes are aggregated to the relevant group, subdivision and division using weights derived from 1996–97 input-output domestic production values, in combination with data from other ABS surveys and industry sources. Where ANZSIC class indexes have not yet been developed, their weight is spread proportionately across the relevant group, subdivision or group of subdivisions dependent on an assessment of what is most appropriate given the activities of the particular class.

Price measurement

69 The development of these new price collections has involved a wide range of diverse industries with different measurement problems. Accordingly, extensive consultation with industry associations and individual businesses has been undertaken to determine the most viable approach, on a case-by-case basis.

70 Characteristics found within the services sector of the economy have complicated the task of price measurement.

71 The tendency within many industries to provide unique, one-off services tailored to the needs of individual customers has posed difficulties in establishing continuity of pricing to constant quality.

72 The 'bundling' of a range of different component services within the one transaction or contract has required investigation of the feasibility of 'unbundling', that is, obtaining separate prices for each of the components of the total service. Where this has not proven to be feasible, the whole service bundle has been priced in total.

73 Respondent businesses are asked to report details of any discounts they offer so that actual transactions prices can be calculated. However, as discounts are sometimes negotiated between individual buyers and sellers in relation to particular transactions, identifying discounts has not always been straightforward.

74 The deregulation of some service industries leads to structural changes and more complex pricing practices. To deal with this, samples are continually updated to incorporate new businesses and pricing methodologies are reviewed over time.

Future developments

75 It is planned to make available indexes for the majority of remaining ANZSIC classes within the transport (freight) & storage division and property & business services division after they have been developed from experimental to production status. At such time these new indexes would contribute to the broader group, subdivision and division indexes presented in this publication. Those ANZSIC classes for which development of a price index is not considered feasible will continue to have their weight distributed for aggregation purposes as described in paragraph 68. Work has also commenced on developing indexes for other divisions of the ANZSIC.

INDEX NUMBERS

76 Index numbers for financial years are simple averages of the relevant quarterly index numbers.

77 Indexes for the Price Index of Materials Used in House Building and the Price Index of Materials Used in Building Other than House Building are presented separately for each of the six State capital cities. These city indexes measure price movements over time for each city. They do not measure differences in price levels between cities.

EXPLANATORY NOTES *continued*

ANALYSIS OF INDEX CHANGES

78 Care should be exercised when interpreting quarter-to-quarter movements in the indexes as short-term movements do not necessarily indicate changes in trend.

79 Movements in indexes from one period to another can be expressed either as changes in 'index points' or as percentage changes. The following example illustrates the method of calculating index points changes and percentage changes between any two periods:

80 Stage of Production: Final commodities index numbers —

March quarter 2007	123.9 (see table 1)
less March quarter 2006	120.5 (see table 1)
Change in index points	3.4
Percentage change	$3.4/120.5 \times 100 = 2.8\%$

81 Tables 5, 6 and 7 provide analyses of the index points contribution which ANZSIC groups make to the stage of production final commodities indexes, in total, and then separately for domestic and imported commodities. For example, in table 5 petroleum refining contributed 3.11 index points to the Total Final commodities index number of 123.9 for March quarter 2007 and 0.01 index points to the net change of 0.0 index points between December quarter 2006 and March quarter 2007.

82 Tables 8 and 9 analyse the contributions to the intermediate and preliminary commodities index numbers, respectively.

83 Similar contribution tables are available on request for most of the industry sector indexes.

FURTHER INFORMATION

84 Further information on recent price index developments in the ABS is presented in the following publications:

Information Paper: Producer and International Trade Price Indexes; Concepts, Sources and Methods, 2006, cat. no. 6429.0

An Analytical Framework for Price Indexes in Australia, cat. no. 6421.0

Producer Price Index Developments, cat. no. 6422.0

Review of the Import Price Index and Export Price Index, Australia, cat. no. 6424.0

Price Indexes and The New Tax System, cat. no. 6425.0

Information Paper: The Introduction of Hedonic Price Indexes for Personal Computers, 2005, cat. no. 6458.0

RELATED PUBLICATIONS

85 Users may also wish to refer to the following related publications, which are available from ABS bookshops:

International Trade Price Indexes, Australia, cat. no. 6457.0

Consumer Price Index, Australia, cat. no. 6401.0

Labour Price Index, Australia, cat. no. 6345.0

Australian National Accounts, Input-Output Tables, cat. no. 5209.0

Balance of Payments and International Investment Position, Australia, cat.no.5302.0

86 Current publications and other products released by the ABS are listed in the *Catalogue of Publications and Products* (cat. no. 1101.0). The Catalogue is available from any ABS office or the ABS web site <<http://www.abs.gov.au>>. The ABS also issues a daily *Release Advice* on the web site which details products to be released in the week ahead.

FOR MORE INFORMATION . . .

<i>INTERNET</i>	www.abs.gov.au the ABS web site is the best place for data from our publications and information about the ABS.
<i>LIBRARY</i>	A range of ABS publications are available from public and tertiary libraries Australia wide. Contact your nearest library to determine whether it has the ABS statistics you require, or visit our web site for a list of libraries.

INFORMATION AND REFERRAL SERVICE

Our consultants can help you access the full range of information published by the ABS that is available free of charge from our web site, or purchase a hard copy publication. Information tailored to your needs can also be requested as a 'user pays' service. Specialists are on hand to help you with analytical or methodological advice.

<i>PHONE</i>	1300 135 070
<i>EMAIL</i>	client.services@abs.gov.au
<i>FAX</i>	1300 135 211
<i>POST</i>	Client Services, ABS, GPO Box 796, Sydney NSW 2001

FREE ACCESS TO STATISTICS

All statistics on the ABS web site can be downloaded free of charge.

<i>WEB ADDRESS</i>	www.abs.gov.au
--------------------	-----------------------



2642700003073

ISSN 1445 2618

RRP \$28.00